

TASCAM US-2x2/US-4x4 Release Notes

Contents

Most recent information	1
Maintenance items	1
Firmware.....	1
For Windows Driver.....	1
Mac Settings Panel	1
Checking the software/firmware versions	2
Procedures for updating the computer software.....	2
Preparing.....	2
Updating the Windows driver and the Mac Settings Panel.....	2
Procedures for updating the firmware.....	3
Preparing.....	3
Downloading the firmware updater.....	3
Connecting.....	3
Updating the firmware.....	4

When using this product with Windows Sonar LE

Driver Mode: ASIO is recommended

<Edit> Menu → Preferences → Audio → Playback and Recording, select ASIO for the topmost item.

Turn Microsoft GS Wavetable Synth to OFF

<Edit> Menu → Preferences → Option → On the MIDI Device selection screen, remove the checkbox selection for the output to "Microsoft GS Wavetable Synth" if it appears in this list.

Most recent information

The most recent versions of the software/firmware for this unit are as follows.

Windows

Driver: 1.02 (No new update)

Firmware: 1.01 (No new update)

Mac OS X

Settings Panel: 1.02 (Previously 1.01. Updated at this time)

Firmware: 1.01 (No new update)

We request that you always use the latest versions of the unit software/firmware. For information about the latest firmware/software, check the TEAC Global Site (<http://teac-global.com/>).

TASCAM US-2x2/US-4x4 Release Notes

Maintenance items

Firmware

■ Version 1.01

- The lengths of audio input and output port names as shown in DAW software have been shortened by deleting "TASCAM".
- A noise about one second long occurred about three seconds after turning the unit on. This noise has been eliminated.

■ Version 1.00

- If the **+48V** switch was set to on when a US-2x2 was operating on bus power (power over USB), the USB connection with the computer could be lost. This has been fixed so that disconnection does not occur.
- When the US-2x2 began Auto Power Save (ERP) operation, power consumption would not decrease sufficiently. This has been fixed.

Windows Driver

■ Version 1.02

- When having both an ASIO Application such as a DAW and a WDM Application open at the same time, changing the active audio between ASIO and DAW could cause the driver to stop working and produce no audio input or output. This required a reboot of the computer to recover. This problem with the driver dropping into this latch-up state has been fixed.
- With the V1.02 Driver, the following steps are required to achieve reliable switching between ASIO Applications (DAW Software) and WDM Applications.
 - When switching from ASIO Application (DAW Software) to a WDM Application
By closing the ASIO application (DAW Software), the WDM Application will be able to pass audio in and out.

MEMO

If the DAW Software has such a setting like "Release ASIO when in the background", or "Share Drivers With Other Programs", enable this and it will be possible to switch to a WDM Application and have it pass audio in and out by making its main window active and without quitting the DAW Software

- When switching from a WDM Application to an ASIO Application (DAW Software)
By quitting the WDM Application and restarting the ASIO Application, the ASIO Application will be able to pass audio in and out.
Note that after quitting the WDM Application, additional steps as described below may be required in the DAW Software to re-enable audio in and out without restarting the DAW software completely.

1, Sonar LE

<Edit> Menu → Settings → Audio Device selection screen, select a different ASIO device, press APPLY, and then reselect the US-2x2/US 4x4 and press APPLY again.

2, Cubase

<Devices> Menu → Device Setup... Dialog, press the Reset button in the middle at the bottom.

3, Studio One

A Message appears such as "The Audio Device US-2x4&US-4x4 could not be initialized. Please check your hardware configuration and try again.", on this message, press "Retry".

■ Version 1.01

- When using a plug-in sound source in DAW software, noise would occur in the plug-in sound output when the buffer size was made large. This problem has been fixed so that noise does not occur even when the buffer size is large.
- In the Windows Settings Panel, "ERP2 Setting On/Off" has been renamed "Auto Power Save On/Off".
- When the operating system is in Japanese, the contents of the end user license agreement are now shown in Japanese.

Mac Settings Panel

■ Version 1.02

- Supported under OS X El Capitan (10.11).

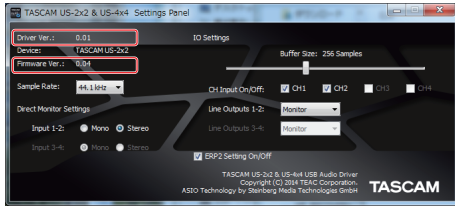
■ Version 1.01

- Text in the Mac Settings Panel was out of place when using OS X Yosemite (10.10). This has been fixed so that text appears in the proper positions.
- In the Mac Settings Panel, "ERP2 Setting On/Off" has been renamed "Auto Power Save On/Off".
- When the operating system is in Japanese, the contents of the end user license agreement are now shown in Japanese.

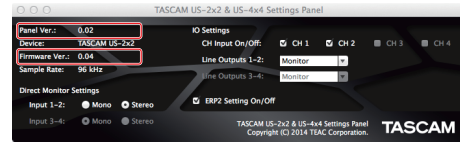
TASCAM US-2x2/US-4x4 Release Notes

Checking the software/firmware versions

Before beginning to update the software/firmware, check the software/firmware version of the US-2x2 or US-4x4 unit being used. For details about how to check the software/firmware version, see “Opening the Settings Panel” in “6 – Using the Settings Panel” of the Reference Manual.



Windows Settings Panel screen



Mac Settings Panel screen

Procedures for updating the computer software

Preparing

- If the latest software has already been installed, there is no need to update it. Use it as is.
- Disconnect all cables connected to the unit.
- Set the phantom power switch to off.

Updating the Windows driver and the Mac Settings Panel

For Windows

1. Download the latest driver for the operating system you are using from the TEAC Global Site (<http://teac-global.com/>) and save it on the computer to be used with the unit.
2. Open the saved driver (zip file) on, for example, the computer desktop.
3. After uncompression, two folders are created: 32-bit and 64-bit. Double-click the “US-2x2_US-4x4_InstallerXX.exe” (“XX” is the number of bits) file suitable for your OS in the folder to automatically start the installer software.
4. After this, follow the installation procedures in “Installing the dedicated driver for Windows” in the Owner’s Manual.

For Mac OS X

NOTE

- Depending on the Gatekeeper setting, a warning message might appear during installation. For information about Gatekeeper, see “Note about Gatekeeper” of the Reference Manual.

1. Download the latest Settings Panel for the operating system you are using from the TEAC Global Site (<http://teac-global.com/>) and save it on the computer to be used with the unit.
2. Double-click “US-2x2_US-4x4 Installer.dmg”, which is the saved disk image file for the Settings Panel, and double-click “US-2x2_US-4x4 Installer.pkg” inside the folder that opens.

NOTE

Depending on the computer’s settings, the downloaded ZIP file might not have opened automatically. In this case, unzip the ZIP file to access the disk image file.

3. When the installer starts, click the “Continue” button.
4. After this, follow the installation procedures in “Installing the Settings Panel for Mac OS X” in the Owner’s Manual.

TASCAM US-2x2/US-4x4 Release Notes

Procedures for updating the firmware

Preparing

- Before updating firmware, follow the instructions in the Owner's Manual to install the following.
 - Windows: Windows driver
 - Mac: Settings Panel applicationThis document assumes that the above software has already been installed.
- If the latest firmware has already been installed, there is no need to update it. You can use it as is.
- Disconnect all cables connected to the unit.
- Set the phantom power switch to off.

Downloading the firmware updater

For Windows

1. Download the firmware updater (as a ZIP file) for the operating system you are using from the TEAC Global Site (<http://teac-global.com/>) and save it on the computer.
2. Uncompress the saved ZIP file on the desktop or other location to create the updater execution file (exe file).

For Mac OS X

1. Download the firmware updater (as a ZIP file) for the operating system you are using from the TEAC Global Site (<http://teac-global.com/>) and save it on the computer.

NOTE

Depending on the computer's settings, the downloaded ZIP file might not have opened automatically. In this case, unzip the ZIP file to access the disk image file.

Connecting

- Connect the unit and the computer with a USB cable.
- If you are using a US-4x4, connect the dedicated AC adapter and turn the unit on.
- Confirm that the USB indicator on the unit is lit.

NOTE

If you are using a US-2x2, it will start with USB bus power, so there is no need to connect an AC adapter.

TASCAM US-2x2/US-4x4 Release Notes

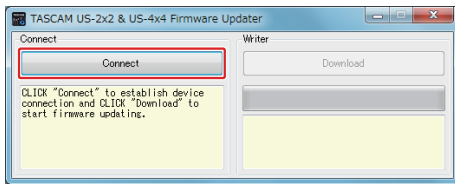
Updating the firmware

For Windows

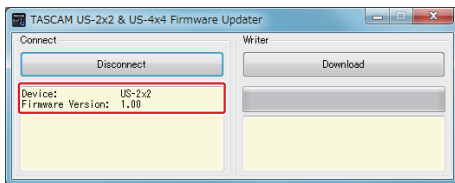
1. Double-click the "US-2x2_US-4x4_FirmwareUpdater_XXX.exe" execution file prepared before to start the updater ("XXX" is the firmware version).




2. Click the Connect button on the updater screen.

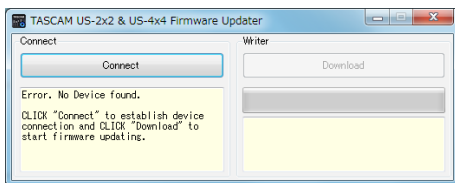


3. Confirm that "Device" shows the model name of the connected unit. In addition, the "Firmware Version" should show the current version.

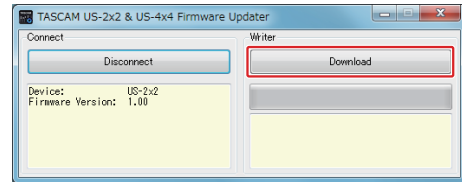


NOTE

- If the current firmware version shown by the updater is the same as the latest version, there is no need to update. In this case, click the  button to close the updater.
- If the unit and computer are not connected, "Error. No Device found" will appear. If this happens, check the following.
 - Confirm that the power is on
 - Confirm that the unit and the computer are connected by a USB cable
 - Confirm that the USB indicator on the unit is lit



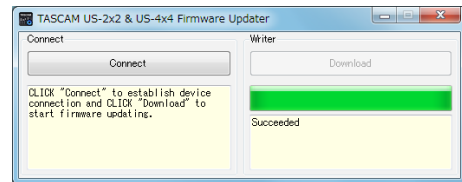
4. When the unit is recognized, the Download button on the right will become enabled. Click the Download button to start the firmware update.



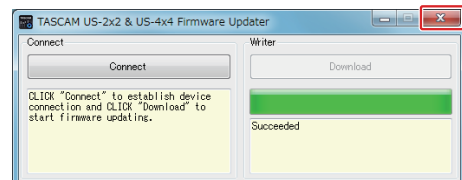
CAUTION

During the update, do not disconnect the AC adapter or the USB cable or turn the computer off. Doing so could damage the firmware and the update might not be able to operate properly.

5. When the firmware update completes, the following screen appears.



6. This completes the update. Click the  button at the top right to close the window.



7. After the update completes, you must turn the unit off once and on again before it can be used.

To use a US-2x2 powered by USB bus power, disconnect the USB cable once and reconnect it again. To use a US-2x2 powered by an AC adapter (sold separately) or to use a US-4x4, disconnect the AC adapter cable from the unit once and then reconnect it.

TASCAM US-2x2/US-4x4 Release Notes

For Mac OS X

1. Double-click the disk image file that you just downloaded.

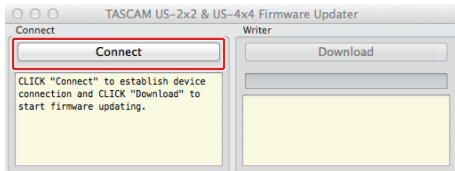


2. Double-click the "US-2x2_US-4x4_FirmwareUpdater_XXX" application as shown below to launch the firmware updater ("XXX" is the firmware updater version).

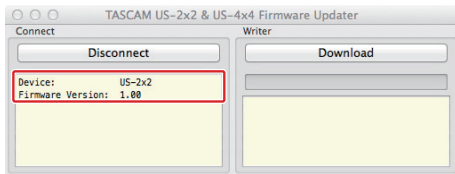


US-2x2_US-4x4_Firmware Updater_100


3. Click the Connect button on the updater screen.



4. Confirm that "Device" shows the model name of the connected unit. In addition, the "Firmware Version" should show the current version.

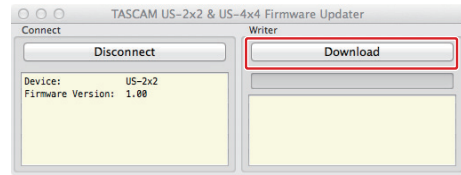


NOTE

- If the current firmware version shown by the updater is the same as the latest version, there is no need to update. In this case, click the  button to close the updater.
- If the unit and computer are not connected, "Error. No Device found" will appear. If this happens, check the following.
 - Confirm that the power is on
 - Confirm that the unit and the computer are connected by a USB cable
 - Confirm that the USB indicator on the unit is lit



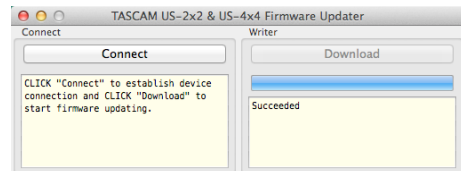
5. When the unit is recognized, the Download button on the right will become enabled. Click the Download button to start the firmware update.



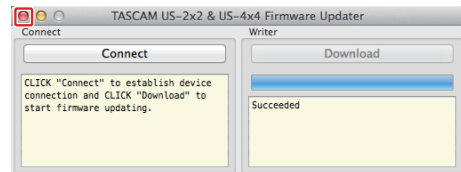
CAUTION

During the update, do not disconnect the AC adapter or the USB cable or turn the computer off. Doing so could damage the firmware and the update might not be able to operate properly.

6. When the updating process completes, the following screen appears.



7. This completes the update. Click the  button at the top left to close the updater.



8. After the update completes, you must turn the unit off once and on again before it can be used.

To use a US-2x2 powered by USB bus power, disconnect the USB cable once and reconnect it again. To use a US-2x2 powered by an AC adapter (sold separately) or to use a US-4x4, disconnect the AC adapter cable from the unit once and then reconnect it.