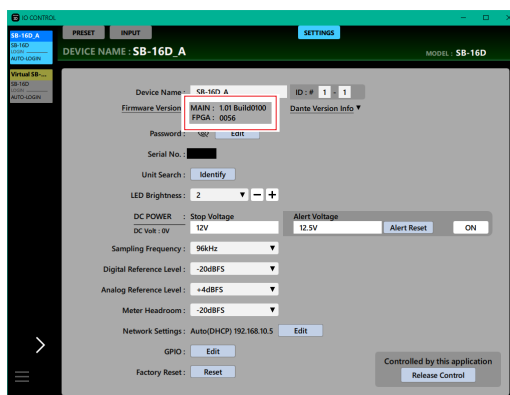


Checking the firmware version

Before starting firmware update procedures, check the firmware version of the SB-16D you are using.

See the “SETTINGS Screen” section in the TASCAM IO CONTROL operation manual for procedures to check the firmware version of an SB-16D unit.



Procedures for updating the firmware

Downloading the firmware updater

For Windows

1. Download the Windows firmware updater (as a ZIP file) for the operating system you are using from the TEAC Global Site (<https://teac-global.com/>) and save it on the computer.
2. Uncompress the saved ZIP file on the desktop or other location to create the updater execution file (exe file)

For Mac

Download the Mac firmware updater (as a ZIP file) for the operating system you are using from the TEAC Global Site (<https://teac-global.com/>) and save it on the computer.

NOTE

Depending on the computer's settings, the downloaded ZIP file might not have opened automatically. In this case, unzip the ZIP file to access the disk image file.

Releasing the control privileges of an SB-16D

Before updating an SB-16D, release its control privileges.

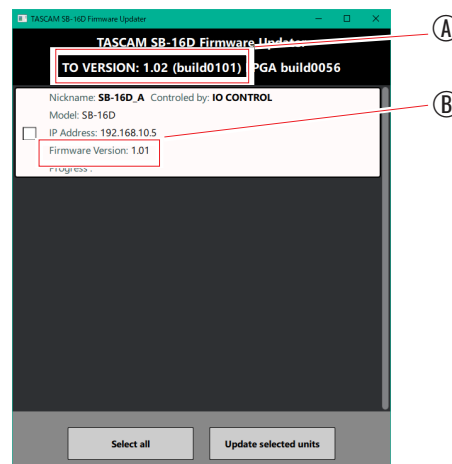
- If a Sonicview has its control privileges, unmount it.
- If TASCAM IO CONTROL has its control privileges, release the privileges.

Connecting

Power the SB-16D and the computer, and connect them to the router with LAN cables.

Updating the firmware

1. Launch the downloaded updater.



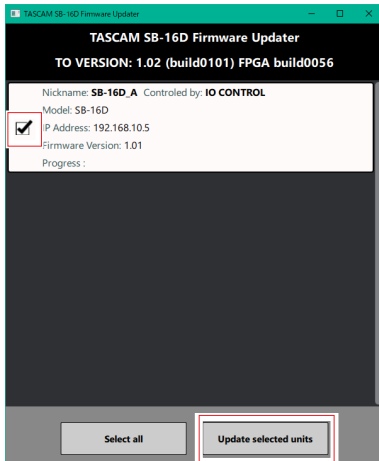
Ⓐ : Update firmware version

Ⓑ : Current firmware version of the SB-16D unit

NOTE

If multiple SB-16D units are connected, multiple devices will be shown.

- Select the device for the firmware update, and tap the "Update selected units" button.



NOTE

If multiple SB-16D units are connected, multiple devices will be shown.

- * Multiple devices can be updated simultaneously if their passwords are the same.

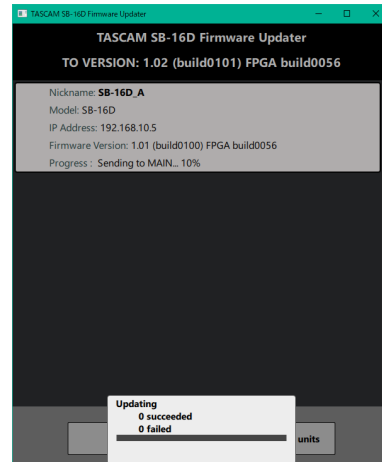
- After inputting the password, tap the "Update" button to start the firmware update.



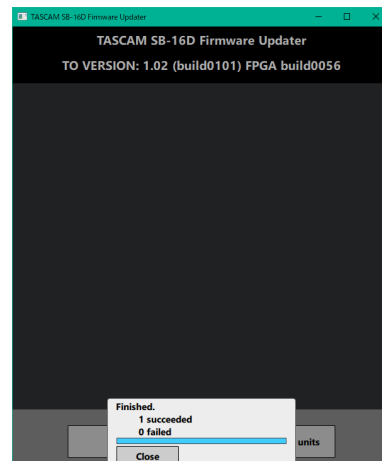
NOTE

- No default password is set for the SB-16D. If no password has been set, click the "Update" button without entering a password.
- The password is the one used to connect the SB-16D unit with TASCAM IO CONTROL. See the "SETTINGS Screen" section in the TASCAM IO CONTROL operation manual for details.

- During the update, the following screen will appear, and the blue and red STATUS indicators on the SB-16D will blink.



- After updating completes, the following screen will appear and the SB-16D will restart. Wait until the blue STATUS indicator on the SB-16D lights continuously.



ATTENTION

- Be careful not to let the power of the SB-16D, the computer or the router be interrupted during the update.
- Be careful not to let any LAN cables become disconnected during the update.
- Be careful not to let the computer go to sleep, for example, during the update.
- If one of the above occurs during the update, the SB-16D unit might become unstartable.

NOTE

For details about STATUS indicator blinking, see "Explanation of STATUS indicator status (lit/blinking/unlit)" in the "Front panel" section of the SB-16D Owner's Manual.

- Tap the "Close" button to close the updater. This completes updating the unit.
- Confirm that the firmware is the updated version. (See "Checking the firmware version" on page 1.)

Procedures for updating in safe mode

If an SB-16D will not start because, for example, the power was interrupted during a firmware update, following these procedures might make starting the SB-16D possible again.

ATTENTION

There is no guarantee, however, that these procedures will make the unit able to start again. If the following procedures do not resolve the issue, contact TASCAM customer support.

1. Turn on the power while pressing the RESET button. Keep pressing the RESET button until the STATUS, SAMPLE RATE, PRIMARY and SECONDARY indicators blink twice per second.

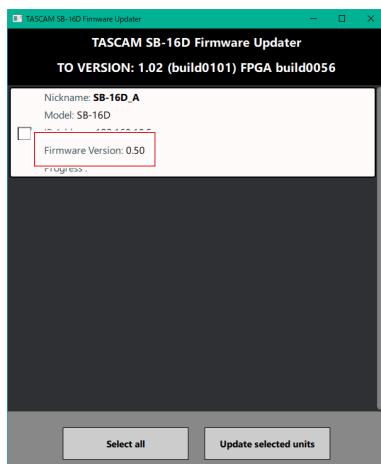
NOTE

For details about launching in safe mode, see the "Launching the unit in safe mode" section of "Restoring factory default settings" in the SB-16D Owner's Manual.

2. After this, follow steps 1–4 in "Procedures for updating the firmware" on page 1.

NOTE

A special version (0.50) for safe mode is shown for the SB-16D unit version.



3. When the update completes, confirm that the STATUS indicator stays lit continuously on the SB-16D.
4. Quit the updater and turn off the SB-16D.
5. Turn the SB-16D on again. Wait until the STATUS indicator lights continuously.
6. Check the SB-16D firmware version. If it is the updated version, then updating in safe mode is complete.