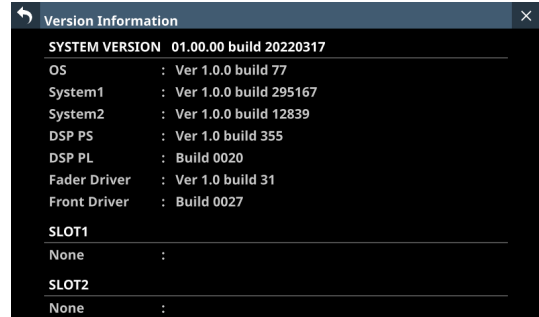
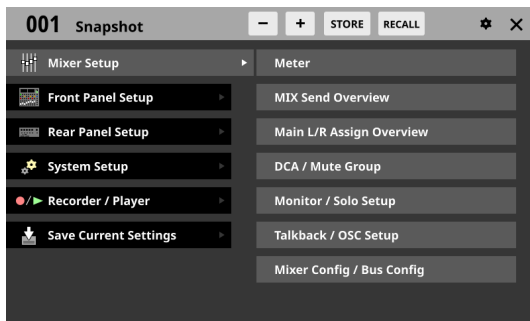


# TASCAM Sonicview 16/Sonicview 24

## Checking the firmware version

Before starting firmware update procedures, check the firmware version of the Sonicview 16/Sonicview 24 you are using.

1. Turn the main unit on.
2. Press the MENU button to switch to the Menu Screen.
3. Tap System Setup > Version Information to open the Version Information Screen.



The "SYSTEM VERSION" is the firmware version. Updating is not necessary if the firmware version shown here is the same or newer than the intended update version.

## Firmware update procedures

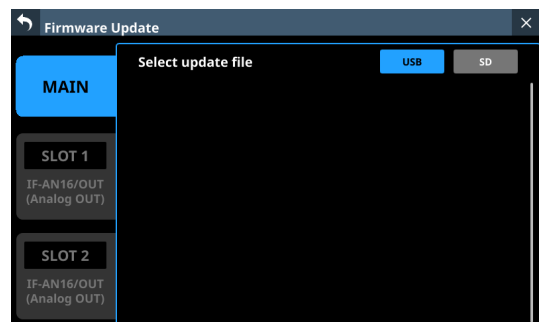
### ATTENTION

If a snapshot created on a unit with MAIN firmware version 1.1.0 or later is recalled by a unit with firmware version 1.0.x, proper operation will not be possible, so the following restrictions apply.

- Downgrading the MAIN firmware to version 1.0.x is not possible.
- Snapshot/All System Data created on units with MAIN firmware version 1.1.0 or later cannot be imported/restored on units with firmware version 1.0.x. (Snapshot/All System Data created by units with firmware version 1.0.x can be imported/restored on units with firmware version 1.1.0 or later.)

1. Download the latest firmware from the TEAC Global Site (<https://teac-global.com/>). Decompress the downloaded file if it is in ZIP format or another compressed file type.
2. Copy the downloaded firmware to the root directory (top level) of a USB flash drive or SD card.
3. Insert the USB flash drive or SD card prepared in step 2 into the USB port or SD card slot on the top panel.

4. Tap Menu Screen > System Setup > Firmware Update to open the Firmware Update Screen.



5. Tap the tab for the device to be updated.

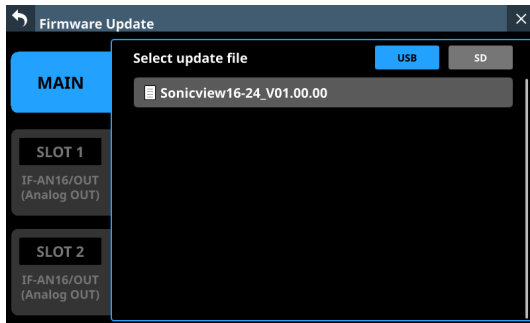
Device	Explanation
MAIN	Update the firmware of the main unit.
SLOT 1	Update the firmware of the expansion card installed in SLOT 1.
SLOT 2	Update the firmware of the expansion card installed in SLOT 2.

### NOTE

Tabs will not be shown for slots that do not have an expansion card installed.

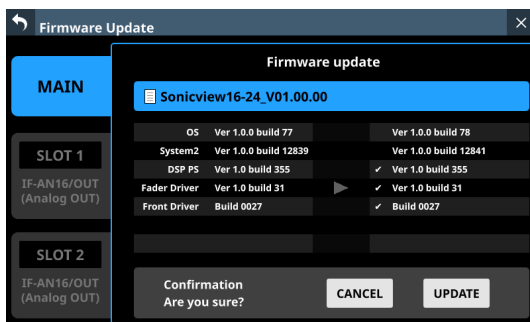
# TASCAM Sonicview 16/Sonicview 24

- Tap the USB or SD button at the top right of the screen to select the media connected in step 3.  
When the USB flash drive or SD card has been recognized and the firmware update file has been verified, the following screen will appear.



## NOTE

- The screen above shows a list of firmware update files in the root folder of the connected USB flash drive or SD card drive. The firmware copied in step 2 above should also be shown.
  - A maximum of five lines of firmware can be shown at the same time. If there are more files than can be shown on the display at once, swipe the list up or down to scroll it.
  - The screen shown above is an example. The actual appearance will differ.
- Tap the firmware to use for the update to select it. This will automatically prepare the firmware updater and the screen shown below will appear.

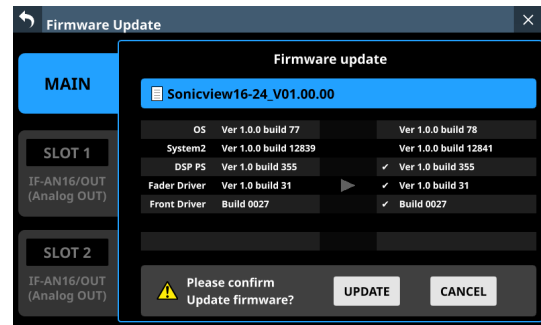


The number of the current version is shown on the left and the update version is shown on the right.

## NOTE

The screen shown above is an example. The actual appearance will differ.

- When an update confirmation message appears, tap the UPDATE button.

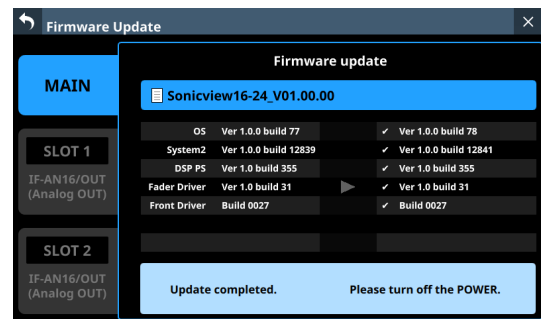


## NOTE

- The UPDATE button will not be shown if updating is not necessary.
  - Tap the CANCEL button to cancel updating and return to the list of update files.
- When an update confirmation message appears again, tap the UPDATE button. The startup screen will be shown briefly and then updating will start.

## ATTENTION

- Be careful not to let the power be interrupted during the update.
  - If the power is interrupted during the update, the unit might become unstartable.
- When the update completes, the following screen will appear.



- Use the POWER switch on the back of the unit to restart it.

## ATTENTION

Even though a RESTART button is shown in MAIN firmware versions 1.0.2 and earlier, do not tap it. Always use the POWER switch on the rear panel to restart the unit.

- After the unit restarts, confirm that the latest firmware is being used (see "Checking the firmware version" on page 1).  
This completes updating the unit.
- Delete the firmware update file from the USB flash drive or SD card.