

# US-322/US-366 USB Audio Interface

## Quick Start Guide

**Before connecting this unit to a computer, the dedicated driver must be installed on the computer.**

Thank you for your purchase of the TASCAM US-322/US-366 USB Audio Interface.

This compact USB audio interface is ideal for use as part of a digital recording system based around a computer. Using this interface, you can easily mix sounds from the computer, gaming devices, guitars, synthesizers and other instruments, as well as, for example, narration using a microphone, and you can broadcast this mix live on the Internet. The included driver software has a mixer screen and various effect screens with faders, knobs, buttons and other controls that make operation even more intuitive. This unit can be operated using only USB power, so you can use it together with a notebook computer to make an extremely compact audio mixing and recording system.

This document provides examples of basic operation of this unit. For details, please download the Owner's Manual from the TEAC Global Site (<http://teac-global.com/>) and refer to it.

### IMPORTANT SAFETY PRECAUTIONS

#### ■ For U.S.A

##### INFORMATION TO THE USER

This equipment has been tested and found to comply with the limits for a Class B digital device, pursuant to Part 15 of the FCC Rules. These limits are designed to provide reasonable protection against harmful interference in a residential installation. This equipment generates, uses, and can radiate radio frequency energy and, if not installed and used in accordance with the instruction manual, may cause harmful interference to radio communications. However, there is no guarantee that interference will not occur in a particular installation. If this equipment does cause harmful interference to radio or television reception, which can be determined by turning the equipment off and on, the user is encouraged to try to correct the interference by one or more of the following measures.

- Reorient or relocate the receiving antenna.
- Increase the separation between the equipment and receiver.
- Connect the equipment into an outlet on a circuit different from that to which the receiver is connected.
- Consult the dealer or an experienced radio/TV technician for help.

##### CAUTION

Changes or modifications to this equipment not expressly approved by TEAC CORPORATION for compliance could void the user's authority to operate this equipment.

#### ■ For Canada

THIS CLASS B DIGITAL APPARATUS COMPLIES WITH CANADIAN ICES-003.  
CET APPAREIL NUMÉRIQUE DE LA CLASSE B EST CONFORME À LA NORME NMB-003 DU CANADA.

##### Declaration of Conformity

Responsible party: TEAC AMERICA, INC.

Address: 1834 Gage Road, Montebello,  
California, U.S.A.

Telephone number: 1-323-726-0303

This device complies with Part 15 of the FCC Rules. Operation is subject to the following two conditions: (1) this device may not cause harmful interference, and (2) this device must accept any interference received, including interference that may cause undesired operation.



### IMPORTANT SAFETY INSTRUCTIONS

- Read these instructions.
- Keep these instructions.
- Heed all warnings.
- Follow all instructions.
- Do not use this apparatus near water.
- Clean only with dry cloth.
- Do not block any ventilation openings. Install in accordance with the manufacturer's instructions.
- Do not install near any heat sources such as radiators, heat registers, stoves, or other apparatus (including amplifiers) that produce heat.
- Do not defeat the safety purpose of the polarized or grounding-type plug. A polarized plug has two blades with one wider than the other. A grounding type plug has two blades and a third grounding prong. The wide blade or the third prong are provided for your safety. If the provided plug does not fit into your outlet, consult an electrician for replacement of the obsolete outlet.
- Protect the power cord from being walked on or pinched particularly at plugs, convenience receptacles, and the point where they exit from the apparatus.
- Only use attachments/accessories specified by the manufacturer.
- Use only with the cart, stand, tripod, bracket, or table specified by the manufacturer, or sold with the apparatus. When a cart is used, use caution when moving the cart/apparatus combination to avoid injury from tip-over.



- 13 Unplug this apparatus during lightning storms or when unused for long periods of time.
- 14 Refer all servicing to qualified service personnel. Servicing is required when the apparatus has been damaged in any way, such as power-supply cord or plug is damaged, liquid has been spilled or objects have fallen into the apparatus, the apparatus has been exposed to rain or moisture, does not operate normally, or has been dropped.
  - The apparatus draws nominal non-operating power from the AC outlet with its POWER or STANDBY/ON switch not in the ON position.
  - The mains plug is used as the disconnect device, the disconnect device shall remain readily operable.
  - Caution should be taken when using earphones or headphones with the product because excessive sound pressure (volume) from earphones or headphones can cause hearing loss.
  - If you are experiencing problems with this product, contact TEAC for a service referral. Do not use the product until it has been repaired.

**CAUTION**

- Do not expose this apparatus to drips or splashes.
- Do not place any objects filled with liquids, such as vases, on the apparatus.
- Do not install this apparatus in a confined space such as a book case or similar unit.
- The apparatus should be located close enough to the AC outlet so that you can easily grasp the power cord plug at any time.
- If the product uses batteries (including a battery pack or installed batteries), they should not be exposed to sunshine, fire or excessive heat.
- CAUTION for products that use replaceable lithium batteries: there is danger of explosion if a battery is replaced with an incorrect type of battery. Replace only with the same or equivalent type.

---

**Included items**

---

This product includes the following items. Take care when opening the package not to damage the items. Keep the packing materials for transportation in the future. Please contact the retailer where you purchased this unit if any of these items are missing or have been damaged during transportation.

- Main uni ..... × 1
- USB cable..... × 1
- DAW software installation guide..... × 1
- Quick Start Guide (this document) including warranty .. × 1

**Support for Bundled DAW Software**

TASCAM does not provide end-user support for the bundled DAW Software. Please check the Help menu of the installed software to find where this support is available.

---

**Trademarks**

---

- TASCAM is a trademark of TEAC CORPORATION, registered in the U.S. and other countries.
- Microsoft, Windows, Windows 7 and Windows Media are either registered trademarks or trademarks of Microsoft Corporation in the United States and/or other countries.
- Apple, Mac, Mac OS, Mac OS X and iTunes are trademarks of Apple Inc.
- VST is registered trademarks of Steinberg Media Technologies GmbH. ASIO is a trademark of Steinberg Media Technologies GmbH.
- Other company names, product names and logos in this document are the trademarks or registered trademarks of their respective owners.




---

**Using the TEAC Global Site**

---

You can download the dedicated drivers and Owner's Manual necessary for this unit from the TEAC Global Site (<http://teac-global.com/>).

1. Open the TEAC Global Site (<http://teac-global.com/>).
2. In the TASCAM Downloads section, click the desired language to open the Downloads website page for that language.

**NOTE**

*If the desired language does not appear, click Other Languages.*

3. Click the product name in the "Search by Model Name" section to open the Downloads page for that product.
4. Select and download the dedicated drivers and Owner's Manual that are needed.

## User registration

Customers in the USA, please visit the TASCAM website (<http://tascam.com/>) to register as a user online.

## Installing the driver

A driver must be installed on the computer to use this unit. Download the latest driver for the operating system you are using from the TEAC Global Site (<http://teac-global.com/>).

### CAUTION

- Restarting the computer might be necessary after installation completes. Save your data and conduct other necessary steps in other applications before quitting them.

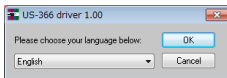
## Installing the driver for Windows

### NOTE

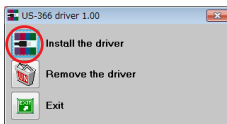
- Install the driver on the computer before connecting the unit to it with the USB cable. If you already connected the USB cable, and the Found New Hardware Wizard launched, cancel and quit the wizard and disconnect the USB cable.
- When installing the driver, a message saying something like, "The software you are installing for the hardware has not passed Windows Logo testing to verify its compatibility with Windows" might appear. If this message appears, click "Continue Anyway" to proceed with the installation.

## Driver installation procedures

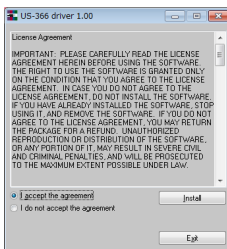
- Download the latest driver for the operating system you are using from the TEAC Global Site (<http://teac-global.com/>).
- Open the zip file containing the driver on the computer desktop.
- Double-click the "setup.cmd" file in the folder that was created when you opened the zip file.
- When the language selection screen (below) appears, select the language you prefer and then click the "OK" button.



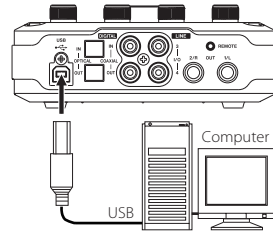
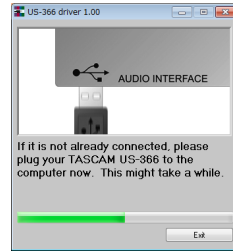
- Click the "Install the Driver" button when the screen below appears.



- Read the contents of the License Agreement, and select "I accept the agreement" if you agree to the terms. Next, click the "Install" button to start installation.



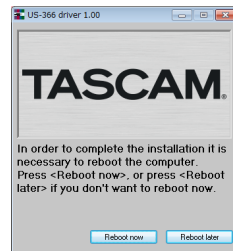
- When the screen below appears, use the supplied USB cable to connect the unit to the PC.



### CAUTION

Before turning on the power, set the unit's **LINE OUT** and **PHONES** knobs to **MIN**. Failure to do so could cause sudden loud noises from monitoring equipment, and this could damage the equipment or harm hearing.

- When the screen below appears, the installation is complete. Click the "Reboot now" button to restart the PC to use the driver.



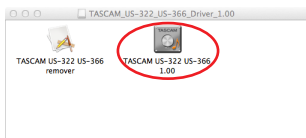
## Installing the driver for Mac OS X

### NOTE

- Install the driver on the computer before connecting the unit to it with the USB cable.
- Depending on the Gatekeeper setting, a warning message might appear during installation. For more information about Gatekeeper, see the "Gatekeeper" section of "3 - Installation" in the Owner's Manual.

## Driver installation procedures

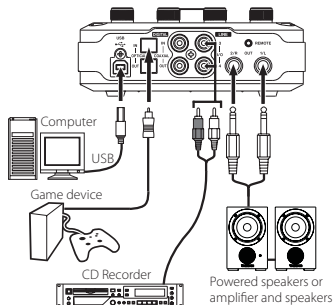
- Download the latest driver for the operating system you are using from the TEAC Global Site (<http://teac-global.com/>).
- Double-click "TASCAM\_US-322\_US-366\_driver\_XX.XX.dmg", which is the downloaded and saved driver disk image file, and double-click "TASCAM\_US-322\_US-366\_XX.XX" inside the folder.



**NOTE**

On this unit, **INPUT 1/L** and **INPUT 2/R** each have two input connectors (**XLR** and **TRS**). Do not connect signals to both of these analog input jacks at the same time. If both are connected, the signal will not be correctly input to the US-322/US-366.

**Rear Panel**



**CAUTION**

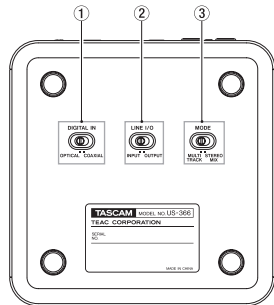
USB 1.1 is not supported.

**NOTE**

The US-366 **DIGITAL IN/OUT** connectors support simultaneous 24-bit/192kHz input and output.

**Making unit settings**

On the bottom panel, the US-366 has **DIGITAL IN**, **LINE I/O** and **MODE** switches, and the US-322 has a **MODE** switch.



**CAUTION**

Before changing these settings, quit the application and disconnect the USB cable from the unit.

- ① **DIGITAL IN switch (only US-366)**  
When using a coaxial cable for digital input, set this to **COAXIAL**. When using an optical cable, set this to **OPTICAL**.

**NOTE**

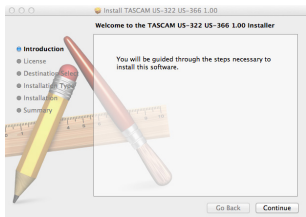
You cannot use the coaxial and optical inputs at the same time.

- ② **LINE I/O switch (only US-366)**  
Set this to **OUTPUT** to use the RCA jacks on the rear panel for output, or set it to **INPUT** to use them for input.
- ③ **MODE switch**  
Use to set whether or not the mixed sound input into this unit and output from the computer are returned to the computer. Set according to the application.

**NOTE**

Depending on the computer's settings, the downloaded zip file might not have opened automatically. In this case, open the zip file first and then double-click the disk image file.

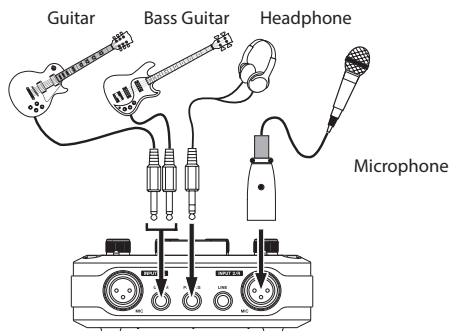
- 3. After the installer launches, follow the instructions on the screen to proceed with the installation.



Restart the computer to complete installation of the driver.

**Connecting other equipment**

**Front Panel**



Connect mics to the XLR jacks and guitars to the **INPUT 1/L** jack.

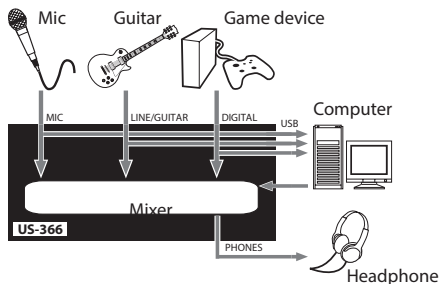
**CAUTION**

- Before turning a **48V** switch **ON** or **OFF**, turn the output volume down using the **PHONES** and **LINE OUT** knobs on the front panel. Depending on the mic, loud noises might be produced and damage could be caused to equipment or to people's hearing.
- Do not connect or disconnect a mic with an input when its **48V** switch is **ON**.
- Turn **48V** switch **ON** only when connecting a condenser microphone that requires phantom power.
- Do not supply phantom power to an unbalanced dynamic microphone.
- Some ribbon mics can be damaged by phantom power. If unsure, do not supply phantom power to a ribbon mic.
- Before connecting headphones, minimize the volume with the **PHONES** knob. Failure to do so could result in sudden loud noises that might damage your hearing or cause other harm.

## MULTI TRACK mode

At the same time that each input enters the mixer, their signals are sent by separate channels to the computer. They are output in stereo from the mixer, however, so they can be listened to using speakers or headphones.

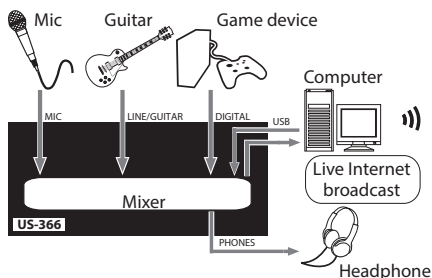
Example: Use with a DAW or similar software



## STEREO MIX mode

Each input is sent to the mixer, and the stereo output of the mixer is sent by USB to the computer. In addition, the mixer output can also be listened to using speakers or headphones.

Example: Use for live Internet broadcasts



## Connecting the USB cable

After completing the above settings, connect the USB cable.

### CAUTION

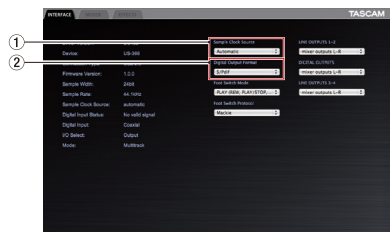
*USB 1.1 is not supported.*

## Making driver software settings

Press the **MIXER PANEL** button on the top of the unit (see the next item) to open the mixer panel on the computer display.

### INTERFACE screen settings

The mixer panel has three screens that can be selected by their tabs. Select the "INTERFACE" tab to open the following "INTERFACE" screen.



#### ① Sample Clock Source

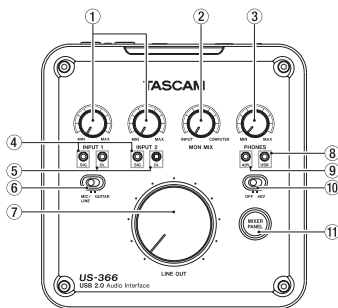
Usually, this should be set to "Automatic".

#### ② Digital Output Format

Usually, this should be set to "S/PDIF". Change this setting when necessary to use "AES/EBU" with, for example, pro equipment.

For details about the other settings, please refer to the Owner's Manual.

## Listening to the input signal



#### ① INPUT 1/2 knobs

Use the knobs for each input (**INPUT 1/L** and **INPUT 2/R**) to adjust their levels. Set them so that their overload (**OL**) indicators do not light.

#### ② MON MIX knob

Use to adjust the balance between the sound input through this unit and the sound sent from the computer by USB.

#### ③ PHONES knob

Use to adjust the level output from the (**PHONES**) headphones output jack.

#### ④ SIG indicators

These light when a signal (of  $-30$  dBFS or more) is input through the corresponding channel.

#### ⑤ OL indicators

These light just before the input signal distorts (when it exceeds  $-2$  dBFS).

#### ⑥ MIC/LINE-GUITAR switch

When a guitar or bass, for example is connected to the **LINE/GUITAR** input jack, set this to **GUITAR**. Otherwise, set it to **MIC/LINE**.

#### ⑦ LINE OUT knob

Use to adjust the level output from the line output (**OUT 1/L** and **OUT 2/R**) jacks.

#### ⑧ USB indicator

This lights when the USB connection is normal.

#### ⑨ 48V indicator

When the **48V** switch is set to **48V**, this indicator lights.

#### ⑩ 48V switch

Use this switch to enable phantom power to the mic input connector. When the **48V** switch is set to **48V**, **48V** indicator above it lights.

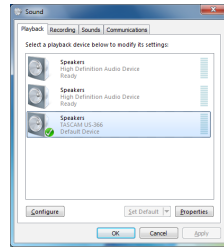
#### ⑪ MIXER PANEL button

Press this button to open the mixer panel on the computer display.

### CAUTION

- Before turning a **48V** switch **ON** or **OFF**, turn the output volume down using the **PHONES** and **LINE OUT** knobs on the front panel. Depending on the mic, loud noises might be produced and damage could be caused to equipment or to people's hearing.

- Do not connect or disconnect a mic with an input when its 48V switch is ON.
- Turn 48V switch ON only when connecting a condenser microphone that requires phantom power.
- Do not supply phantom power to an unbalanced dynamic microphone.
- Some ribbon mics can be damaged by phantom power. If unsure, do not supply phantom power to a ribbon mic.
- Before connecting headphones, minimize the volume with the PHONES knob. Failure to do so could result in sudden loud noises that might damage your hearing or cause other harm.



## Using the mixer functions on the mixer panel

Press the **MIXER PANEL** button on the top panel of the unit to open the mixer panel on the computer display, and select the “MIXER” tab to show the “MIXER” screen.



- 1 **Pan sliders**  
Drag the sliders left and right to change the stereo position of each channel. They appear blue when centered (“C”) and appear orange otherwise.
  - 2 **Channel and master faders**  
Drag up and down on the faders to adjust the balance of the various inputs. Use the MASTER L/R fader to adjust the overall output level of the mixer.
- See the Owner’s Manual for information about other setting changes and setting other items not explained above.

## Making computer settings

### Windows and Windows Media Player

Here we explain settings using Windows 7. For other operating systems, see “6 – Application guide” in the Owner’s Manual.

1. Quit all applications and open the “Control Panel” from the “Start” menu.
2. Open “Sound”.

#### NOTE

If you do not see this item, click “Hardware and Sound”.



3. Click the “Playback” tab, click “Speakers TASCAM US-322 (US-366)” and click “Set Default”. The green check mark will move to the “Speakers TASCAM US-322 (US-366)” item.

Make the following settings if you are using the unit for live broadcast on the Internet or otherwise as a recording device. Click the “Recording” tab, click “Line In TASCAM US-322 (US-366)” and click “Set Default”. The green check mark will move to the “Line In TASCAM US-322 (US-366)” item.

4. Click “OK”.
5. Start Windows Media Player, select an audio file and begin playback.

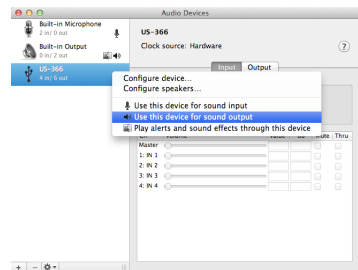
#### NOTE

- If you change the setting while Windows Media Player is running, the software will not recognize that the device has been changed. In this case, restart Windows Media Player.
- If you still cannot hear sound after making the settings and completing the procedures above, restart the computer.
- If you make this setting, sound will be output through this unit, but no sound will be output by the computer’s speakers or headphone jack.
- If you want to output Windows Media Player from this unit’s DIGITAL OUT, on the “INTERFACE” tab of the mixer panel, set “DIGITAL OUTPUTS” to “Computer 1-2”.

### Mac OS X and iTunes

Here we explain settings using Mac OS X 10.8 Mountain Lion. For other operating systems, see “6 – Application guide” in the Owner’s Manual.

1. Open the Utilities folder, which is inside the Applications folder, and double-click Audio MIDI Setup to launch it.
2. Control-click the US-322/US-366. Check use this device for sound output. This moves speaker icon to US-322/US-366.



Make the following settings if you are using the unit for live broadcast on the Internet or otherwise as a recording device. Control-click the “US-322(US-366)”. Check use this device for sound input. This moves microphone icon to “US-322(US-366)”.

3. Launch iTunes, select an audio file and start playback.

#### NOTE

If you want to output iTunes from this unit’s DIGITAL OUT without passing through its mixer, on the “INTERFACE” tab of the mixer panel, set “DIGITAL OUTPUTS” to “Computer 1-2”.



## WARRANTY

### < In the United States >

This warranty gives you specific legal rights and you may also have other rights which vary from state to state. This warranty is only valid within the country the unit was originally purchased.

### WHAT IS AND IS NOT COVERED

Except as specified below, this warranty covers all defects in materials and workmanship in this product. The following are not covered by the warranty:

1. **Damage to or deterioration of the external cabinet.**
2. **Damages resulting from accident, misuse, abuse or neglect.**
3. **Damage resulting from failure to perform basic daily maintenance and/or calibration or otherwise resulting from failure to follow instructions contained in your owner's manual.**
4. **Damage occurring during shipment of the product. (Claims must be presented to the carrier)**
5. **Damage resulting from repair or attempted repair by anyone other than TEAC or an authorized TASCAM service station.**
6. **Damage resulting from causes other than product defects, including lack of technical skill, competence, or experience of the user.**
7. **Damage to any unit which has been altered or on which the serial number has been defaced, modified or is missing.**

### WHO MAY ENFORCE THE WARRANTY

This warranty may be enforced only by the original purchaser. This warranty is not valid if the product was purchased through an unauthorized dealer.

### LENGTH OF WARRANTY

All parts except heads and disk drives are warranted for one (1) year from the date of original purchase. Heads and disk drives are warranted to ninety (90) days from date of original purchase. Labor is warranted for ninety (90) days from date of original purchase.

### WHAT WE WILL PAY FOR

We will pay all labor and material expenses for items covered by the warranty. Payment of shipping charges is discussed in the next section of this warranty.

### HOW YOU CAN GET WARRANTY SERVICE

Your unit must be serviced by an authorized TASCAM service station in the United States. (This warranty is not enforceable outside the U.S.) If you are unable to locate an authorized TASCAM service station in your area, please contact us. We either will refer you to an authorized service station or instruct you to return the unit to the factory. Whenever warranty service is required, you must present a copy of the original dated sales receipt from an Authorized TASCAM Dealer. You must pay any shipping charges if it is necessary to ship the product to service. However, if the necessary repairs are covered by the warranty, we will pay return surface shipping charges to any destination within the United States.

### LIMITATION OF IMPLIED WARRANTIES

Any implied warranties, INCLUDING WARRANTIES OF MERCHANTABILITY AND FITNESS FOR A PARTICULAR PURPOSE, are limited in duration to the length of this warranty.

### EXCLUSION OF DAMAGES

TEAC's liability for any defective product is limited to repair or replacement of the product, at TEAC's option. TEAC shall not be liable for:

1. **Damages based upon inconvenience, loss of use of the product, loss of time interrupted operation or commercial loss; or**
2. **Any other damages, whether incidental, consequential or otherwise.**

Some states do not allow limitations on how long an implied warranty lasts and/or do not allow the exclusion or limitation of incidental or consequential damages, so the above limitations and exclusions may not apply to you.

### To locate an Authorized Service Center in Your Area

CALL 1-800-447-8322

### < Europe >

This product is subject to the legal warranty regulations of the country of purchase. In case of a defect or a problem, please contact the dealer where you bought the product.

Ce produit est sujet aux réglementations concernant la garantie légale dans le pays d'achat. En cas de défaut ou de problème, veuillez contacter le revendeur chez qui vous avez acheté le produit.

Dieses Gerät unterliegt den gesetzlichen Gewährleistungsbestimmungen des Landes, in dem es erworben wurde. Bitte wenden Sie sich im Gewährleistungsfall an den Händler, bei dem sie das Gerät erworben haben.

Questo apparecchio è conforme alle norme sulla garanzia vigenti nel rispettivo Paese in cui esso è stato acquistato. Si prega di rivolgersi al proprio commerciante, presso il quale è stato acquistato l'apparecchio, nel caso in cui si voglia richiedere una prestazione in garanzia.

Las condiciones de garantía de este aparato están sujetas a las disposiciones legales sobre garantía del país en el que ha sido adquirido. En caso de garantía, debe dirigirse al establecimiento donde adquirió el aparato.

### < In other countries/areas >

This warranty gives you specific legal rights, and you may also have other rights that vary by country, state or province.

If you have a warranty claim or request, please contact the dealer where you bought the product.

该保证书赋予了顾客特定的合法权利，并且因国家，州或省等地域的不同，顾客可能拥有其他权利。如需申请或要求保修，请与购买本产品的销售店进行联系。

If you require repair services for your TASCAM equipment, please contact the dealer where the product was purchased from or the TASCAM Distributor in your country. A list of TASCAM Distributors can be found on our website at: <http://teac-global.com/>



TEAC CORPORATION  
 Phone: +81-42-356-9143  
 1-47 Ochiai, Tama-shi, Tokyo 206-8530 Japan

<https://tascam.jp/jp/>

TEAC AMERICA, INC.  
 Phone: +1-323-726-0303  
 1834 Gage Road, Montebello, California 90640 USA

<http://tascam.com/>

TEAC UK Ltd.  
 Phone: +44-8451-302511  
 2 Huxley Road, Surrey Research Park Guildford, GU2 7RE, United Kingdom

<http://tascam.eu/>

TEAC EUROPE GmbH  
 Phone: +49-611-71580  
 Bahnstrasse 12, 65205 Wiesbaden-Erbenheim, Germany

<http://tascam.eu/>

TEAC SALES & TRADING(SHENZHEN) CO., LTD  
 Phone: +86-755-88311561~2  
 Room 817, Block A, Hailrun Complex, 6021 Shennan Blvd., Futian District, Shenzhen 518040, China

<http://tascam.cn/>

## WARRANTY

Model/Modèle/Modell  
 Modello/Modelo/型号

**US-322/US-366**

Owner's name/Nom du possesseur/Name des  
 Eigentümers  
 Nome del proprietario/Nombre del  
 propietario/顾客姓名

Serial No./No de Série/Seriennummer  
 Numero di serie/Número de serie/序列号

Address/Adresse/Adresse  
 Indirizzo/Dirección/顾客地址



Date of purchase/Date de l'achat/Datum des  
 Kaufs  
 Data dell'acquisto/Fecha de compra/购买日期

Dealer's name/Nom du détaillant/Name des  
 Händlers  
 Nome del commerciante/Nombre del  
 establecimiento/销售店名

**TASCAM**  
<http://teac-global.com/>

Dealer's address/Adresse du détaillant/Adresse  
 des Händlers  
 Indirizzo del commerciante/Dirección del  
 establecimiento/销售店地址