

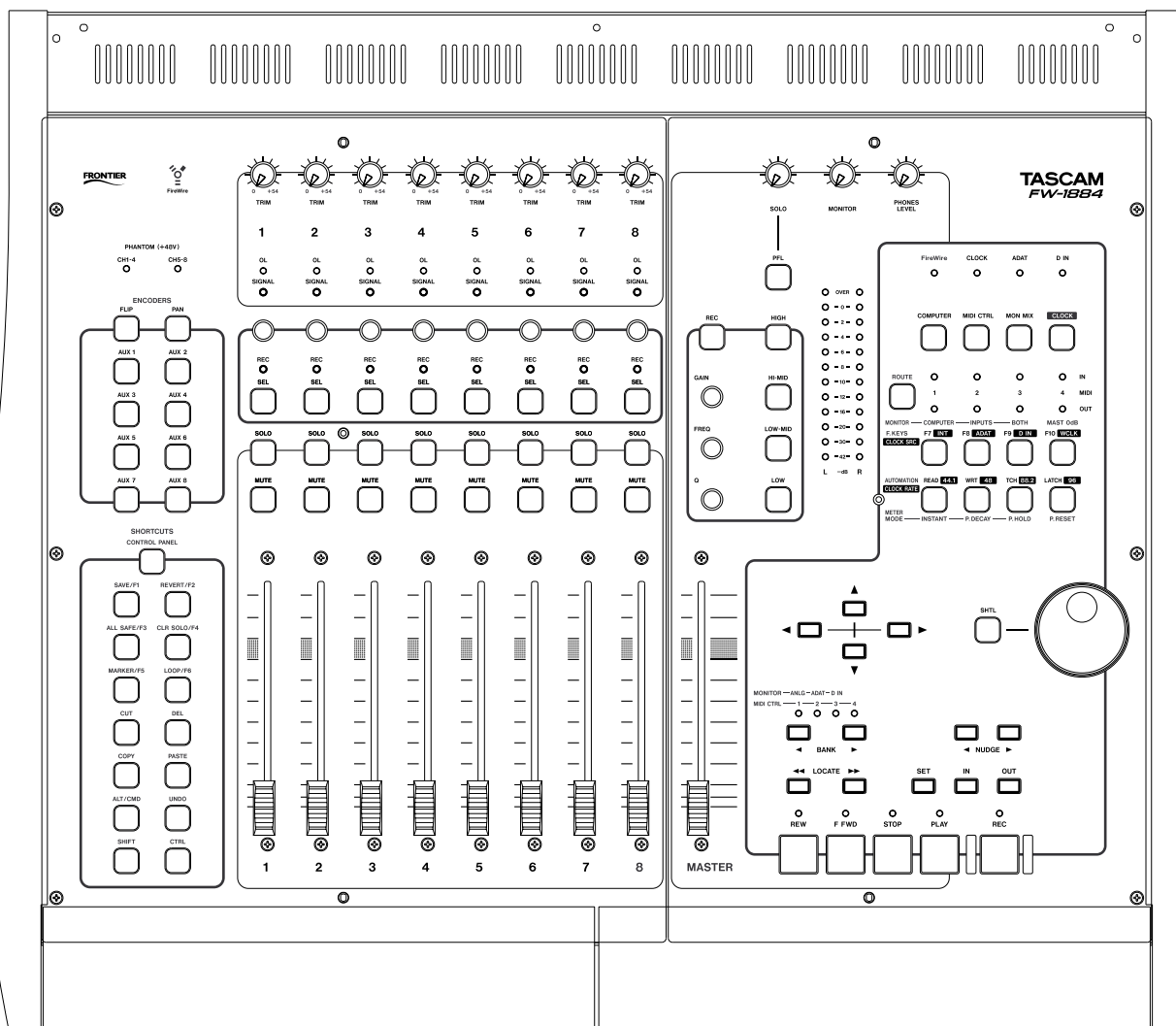
# TASCAM

TEAC Professional Division

## FRONTIER DESIGN GROUP

# FW-1884

## Professional Control Surface / FireWire Audio-MIDI Interface



SONAR 2 (Windows) NOTES

# Table of Contents

Standard Functionality.....	3
Programmable Keys .....	3
Virtual Windows Keys.....	3
<b>To Configure the FW-1884 with SONAR.....</b>	<b>3</b>
To Display the FW-1884 Properties Page .....	4
<b>Accessing Tracks.....</b>	<b>4</b>
To Shift the FW-1884 Controls to the Next or Previous Bank of 8 Tracks .....	4
To Shift the FW-1884 Controls to the Next or Previous Track.....	5
Bank indicators .....	5
To Change the Master Fader Assignment .....	6
<b>Playback .....</b>	<b>6</b>
To Play and Stop.....	6
To Rewind or Fast Forward.....	6
To Jog Forward or Back.....	7
To Jump to the Beginning or End.....	7
To Jump to a Marker .....	7
To Set a New Marker.....	7
To See the List of Markers .....	7
To Set From/Thru Selection Points.....	7
To go to Selection In/Out Points .....	8
To Set Loop In/Out from current Selection ...	8
To Set Loop In/Out Points.....	8
To Toggle the Audio Engine On/Off .....	8
To Reset SONAR.....	8
To Solo or Un-solo a Track .....	8
To Un-solo All Tracks in a Project.....	8
To Mute or Unmute a Track.....	8
To Unmute All Tracks in a Project .....	8
To Archive or Un-archive a Track .....	8
To Enable/Disable Automation Playback.....	8
<b>Recording .....</b>	<b>9</b>
To Record .....	9
Disarm Track Record .....	9
To Set Punch In/Out from current Selection ..	9
To Set Punch In/Out Points.....	9
To Record Automation.....	9
To Snapshot Automation .....	9
To Enable Offset Automation .....	10
<b>Navigating within SONAR.....</b>	<b>10</b>
To Access Screen Menu Items .....	10
To Accept an action or dialog .....	10
To Cancel an action or dialog.....	10
To Cancel an action .....	10
To Move within Dialog Windows .....	10
To Change the Frontmost Window .....	10
To Close a Window .....	10
<b>Mixing.....</b>	<b>11</b>
Controlling Master Volume .....	11
To Change the Master Fader Assignment ....	11
To Control Track Volume .....	11
To Control Track Pan.....	11
To Flip Fader and Encoder Control.....	11
<b>Aux Buses .....</b>	<b>12</b>
To Control Aux Send Level on a Track.....	12
To Enable/Disable Aux Send on a Track.....	12
To set Pre/Post for Aux Send on a Track .....	12
To Set Aux Send Pan on a Track .....	12
<b>Effects.....</b>	<b>13</b>
To Configure the FxEQ.....	13
To Open the FxEQ Property Page .....	13
<b>FW-1884 Control Listings .....</b>	<b>14</b>
Modifier Keys .....	14
Surface Keys and Knobs .....	14
Virtual Keyboard Keys .....	17
Re-Configurable Function Keys.....	17

The TASCAM FW-1884 control surface SONAR plug-in enables control of the most common functions within SONAR. By default the surface is set up to easily play, record, and control automation functions. Extended key modifiers and re-mappable function keys make it easy to access a wide variety of additional SONAR features.

This section will document the FW-1884's control surface implementation within SONAR. It is not intended as a guide to basic recording or to working with SONAR. For detailed information on SONAR, please refer to the SONAR manual.

Note that the FW-1884 is supported in versions of SONAR beginning with v 2.2. If you have an earlier version of the program, please check the Cakewalk website for updates and other pertinent information.

---

## Standard Functionality

The FW-1884 keys, faders, and encoders provide access to the most commonly used SONAR functions. Used with modifier keys (**SHIFT**, **CTRL**, and **SET**) these controls are extended to encompass additional functions.

---

## Programmable Keys

**F 1** through **F 10** and the footswitch can be configured to have up to three functions per key (normal, and with the **SHIFT** and **CTRL** modifiers). For example the **F 7** key is mapped to Sonar's **ENTER** key on the computer keyboard by default, useful for pressing "Enter" to accept dialog screens, etc.

---

## Virtual Windows Keys

**SHIFT**, **CTRL**, and **ALT** are sent to SONAR as Windows virtual keyboard keys. Other virtual keys include the arrow keys (**▲**, **◀**, **▶** and **▼**), **◀NUDGE** and **NUDGE▶**, and programmable virtual keys (**Enter**, **Esc**, **Cancel**, **Space**). These provide for navigation of SONAR's menus and dialogs from the FW-1884.

- Modifier keys (**SHIFT**, **CTRL**, **SET** and **WRT**) are modifier keys. They have no function when pressed alone, but when held down they alter the behavior of other keys when pressed.
- The **ALT** key is a Windows virtual key and just like its keyboard counterpart it is used as a keyboard modifier and is "sticky" when accessing menus.

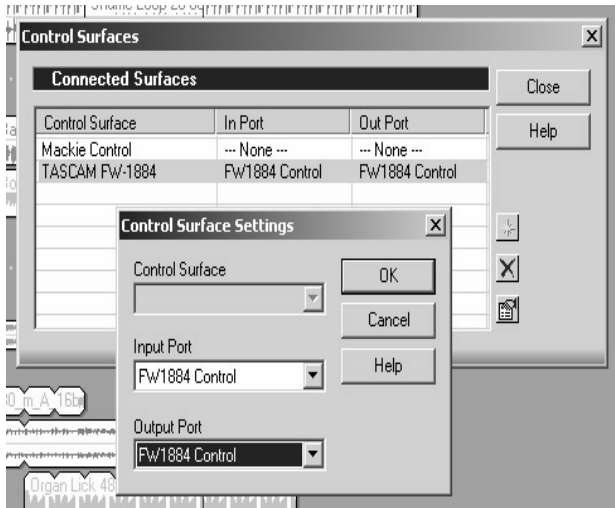
---

## To Configure the FW-1884 with SONAR

- 1 Make sure the FW-1884 is connected to your computer, powered on, and that you have installed the FW-1884 driver before you launch SONAR.
- 2 Launch SONAR.
- 3 Use the **Options-MIDI Devices** menu command. The **MIDI Devices** dialog appears.
- 4 Make sure that **FW-1884 Control** is highlighted (selected) in both the **Inputs** and **Outputs** lists. Click **OK**.
- 5 Use the **Options-Control Surfaces** menu command. The **Control Surfaces** dialog appears.
- 6 Click the **Add** button. This will open the **Control Surface Settings** dialog.
- 7 In the **Control Surface** field, use the drop-down menu to select the **TASCAM FW-1884** option.
- 8 In the **Input Port** field and **Output Port** fields, select the **FW-1884 Control** option. Click **OK**.

## SONAR 2 (Windows) : Accessing Tracks

- 9 The FW-1884 name appears in the Control Surfaces dialog under Connected Surfaces. Click Close.



---

### To Display the FW-1884 Properties Page

- Use the **Tools** menu command and click the TASCAM FW-1884 menu item.

or

- if the Control Surfaces Toolbar is visible, click the Properties key at the end of the toolbar.

---

### Accessing Tracks

The FW-1884 provides access to eight tracks and one master output track at a time. The **BANK** keys are used to shift which SONAR tracks the FW-1884 is controlling.

---

#### To Shift the FW-1884 Controls to the Next or Previous Bank of 8 Tracks

Press the **◀BANK** or **BANK▶** keys to shift through banks of faders in groups of eight. (For example, if you are controlling SONAR channels 1-8, pressing the **BANK▶** key once will shift the FW-1884's channel faders to control SONAR channels 9-16.) Note that if your highest bank contains less than eight channels, the unassigned faders will have no effect. (For example, if your project contains a total of 20 channels,

- Pressing **BANK▶** once controls SONAR channels 9-16
- Pressing **BANK▶** again controls SONAR channels 17-20, and faders 5-8 have no effect.

# SONAR 2 (Windows) : Accessing Tracks

## To Shift the FW-1884 Controls to the Next or Previous Track

Hold **SHIFT** and press the **◀BANK** or **BANK▶** keys to shift through faders in single channel steps. (For example, if you are controlling SONAR channels 1-8, holding **SHIFT** and pressing the **BANK▶** key once will shift the FW-1884's channel faders to control SONAR channels 2-9.) Note that if you have reached your highest assigned channel and shift downward in groups of eight, the FW-1884 will seek the next full bank of eight faders. (For example, if your project contains a total of 20 channels,

- Pressing **BANK▶** once controls SONAR channels 9 through 16
- Holding **SHIFT** and pressing **BANK▶** four times controls SONAR channels 13 through 20
- Pressing **◀BANK** once controls SONAR channels 5 through 12
- Pressing **◀BANK** again controls SONAR channels 1 through 8

## Bank indicators

The four indicators directly above the **◀BANK** and **BANK▶** keys light to indicate the currently-selected bank as follows:

BANK indicators <sup>a</sup>	SONAR tracks
☆ ● ● ●	1 — 8
● ☆ ● ●	9 — 16
● ● ☆ ●	17 — 24
● ● ● ☆	25 — 32
● ☆ ☆ ☆ ☆	33 — 40
☆ ● ☆ ☆ ☆	41 — 48
☆ ☆ ● ☆	49 — 56
☆ ☆ ☆ ●	57 — 64
● ● ● ●	All other track ranges

a. ☆ = indicator on, ● = indicator off

# SONAR 2 (Windows) : Playback

## To Change the Master Fader Assignment

You can shift the **MASTER FADER** assignment to the next or previous virtual Master by holding the **SHIFT** and **CTRL** keys while pressing either the **◀BANK** or **BANK▶** key.

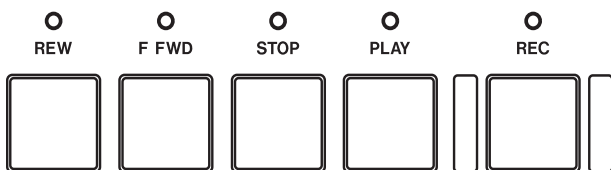
While **SHIFT** and **CTRL** are held down, the four indicators directly above the **◀BANK** and **BANK▶** keys light to indicate which virtual Master the **MASTER** fader is assigned to, as follows:

BANK indicators <sup>a</sup>	MASTER fader mapping
☆ ● ● ●	Master 1
● ☆ ● ●	Master 2
● ● ☆ ●	Master 3
● ● ● ☆	Master 4
● ☆ ☆ ☆	Master 5
☆ ● ☆ ☆	Master 6
☆ ☆ ● ☆	Master 7
☆ ☆ ☆ ●	Master 8
● ● ● ●	All other masters

a. ☆ = indicator on, ● = indicator off

## Playback

The FW-1884 can control SONAR's transport functions (playback, rewind, fast forward), as well as other playback-related operations (markers, shuttle, mute, solo, looping and archive).



## To Play and Stop

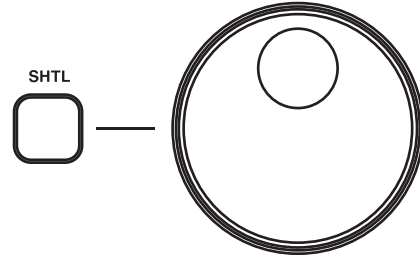
- Press the **PLAY** key to play.
- Press the **STOP** key to stop.

## To Rewind or Fast Forward

- Press **REW** or **F FWD** once to rewind or fast forward one measure.
- Hold either key down to rewind or fast forward faster.

## To Jog Forward or Back

- Turn the data wheel clockwise to jog forward or counter-clockwise to jog backward.
- When the **SHTL** key is *off*, the data wheel moves the transport in one measure steps. Holding the **SHIFT** key reduces this to one-beat steps.
- When the **SHTL** key is *on*, the data wheel moves the transport in 1000-tick steps. Holding the **SHIFT** key reduces this to 100-tick steps.



## To Jump to the Beginning or End

- Hold the **SET** key and press **REW** to jump to the beginning.
- Hold the **SHIFT** key and press **F FWD** to jump to the end.

### NOTE

*This also stops at the LOOP IN point if LOOP is enabled.*

## To Jump to a Marker

- Press the **LOCATE ►►** key to jump to the next marker, or the **◄◄ LOCATE** key to jump to the previous marker.



## To Set a New Marker

- 1 Move the **Now** time to the place where you want to set a marker.
- 2 Press the **MARKER/F5** key (the default F5 key mapping). Alternatively, hold **SET** and press **LOCATE ►►**.  
The **Marker** dialog appears.
- 3 Fill in the desired fields and click **OK**.  
Alternatively, you can press the **ENTER/F7** key to accept a blank Marker.  
Pressing **CANCEL/F9** or **ESC/F10** aborts Marker creation.

## To See the List of Markers

- 1 Hold **CTRL** and press **MARKER/F5**. The Marker list appears.
- 2 To close the window hold **SHIFT** and **CTRL** and press the **NUDGE ►** key.

## To Set From/Thru Selection Points

- 1 Move the **Now** time to the desired start point.
- 2 Hold **SET** and press the **IN** key.
- 3 Move the **Now** time to the desired end point.
- 4 Hold **SET** and press the **OUT** key.

## SONAR 2 (Windows) : Playback

---

### To go to Selection In/Out Points

- Press the **IN** key to go to the beginning of the selection area.
- Press the **OUT** key to go to the end of the selection area.

---

### To Set Loop In/Out from current Selection

- 1 Ensure an area is selected.
- 2 Hold **SHIFT**, **CTRL** and **SET** and press the **OUT** key.

---

### To Set Loop In/Out Points

- 1 Move the **Now** time to the desired loop start point.
- 2 Hold **SHIFT** and **SET** and press the **IN** key.
- 3 Move the **Now** time to the desired loop end point.
- 4 Hold **SHIFT** and **SET** and press the **OUT** key.

---

### To Toggle the Audio Engine On/Off

- Hold down **SHIFT** and press **PLAY**.

---

### To Reset SONAR

- Hold down **CTRL** and press the **STOP** key.

---

### To Solo or Un-solo a Track

- Press the **SOLO** key of the track you want to solo or un-solo.

---

### To Un-solo All Tracks in a Project

- Press the **CLR SOLO/F4** key (default mapping).

---

### To Mute or Unmute a Track

- Press the **MUTE** key of the track you want to mute or unmute.

---

### To Unmute All Tracks in a Project

- Hold **SHIFT** and press the **CLR SOLO/F4** key (default mapping).

---

### To Archive or Un-archive a Track

- Hold **CTRL** and press the **MUTE** key of the track that you want to archive or un-archive.

---

### To Enable/Disable Automation Playback

- Press the **READ** key to toggle Automation Playback on/off.



---

## Recording

---

The FW-1884 can control SONAR's record functions, including recording, punch recording, and automation recording.

---

### To Record

- 1 Arm a track by holding the **REC** key of the desired track and pressing the track's **SEL** key.
- 2 Move the *Now* time to where you want to start recording.
- 3 Press the transport **RECord** key to start recording. Alternately you can use the footswitch (default mapping).
- 4 Press the **STOP** key to stop recording. Alternately you can use the footswitch (default mapping).

---

### Disarm Track Record

- All armed tracks can be disarmed by pressing the **ALL SAFE/F3** key.

They can also be disarmed by holding **SHIFT** and pressing the track's (or tracks') **REC** key(s).

---

### To Set Punch In/Out from current Selection

- 1 Move the *Now* time to the desired start point.
- 2 Hold **SET** and press the **IN** key.
- 3 Move the *Now* time to the desired end point.
- 4 Hold **SET** and press the **OUT** key. Ensure a selection area is shown.
- 5 Hold **SHIFT** and press the **REC** key.

---

### To Set Punch In/Out Points

- 1 Ensure SONAR is in Auto-Record Mode (setting *Punch In/Out from Selection* automatically does this).
- 2 Move the *Now* time to the desired Punch In point by holding **CTRL** and **SET** and pressing the **IN** key.
- 3 Move the *Now* time to the desired Punch Out point (hold **CTRL** and **SET** and press the **OUT** key).



---

### To Record Automation

- 1 Hold the **WRT** key and press a track's **SEL** key to arm that track for automation recording.
  - 2 Hold **SHIFT** and press the transport **RECord** key to start recording automation.
- Press the **STOP** key to stop recording.
  - Hold **SHIFT** and press **WRT** to disable all record automation tracks.

---

### To Snapshot Automation

- Ensure that one or more tracks are enabled for Record Automation.
- Press the **TCH** key to take an automation Snapshot of settings at the present time.

# SONAR 2 (Windows) : Navigating within SONAR

---

## To Enable Offset Automation

- Press the **LATCH** key to turn offset mode on/off.

Offset mode captures automation as changes from the previous value.

---

## Navigating within SONAR

---

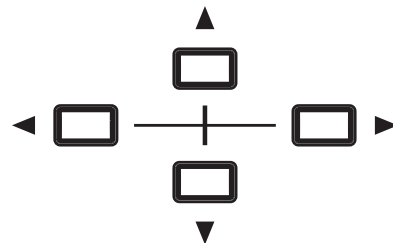
You can perform much of SONAR's navigation using the FW-1884 instead of a keyboard. Here are some of the common actions that can be performed.

---

### To Access Screen Menu Items

- Press and release the **ALT** key.
- Use the **▲/▼** and **◀/▶** arrow keys to navigate around the on-screen menus, sub-menus and menu items.
- Press the **ENTER/F7** key to select a menu item.

- Press the **ESC/F10** key to cancel.



---

### To Accept an action or dialog

- Press the **ENTER/F7** key.

---

### To Cancel an action or dialog

- Press the **CANCEL/F9** key.

---

### To Cancel an action

- Press the **ESC/F10** key.

---

### To Move within Dialog Windows

- Press the **◀NUDGE** or **NUDGE▶** keys to move from one dialog item to another.
- Use the arrow keys to change items like popup lists and radio keys.
- Press the **SPACE/F8** key to toggle checkboxes on/off.

---

### To Change the Frontmost Window

- Hold **CTRL** and press the **◀NUDGE** or **NUDGE▶** key to cycle back/forward through open windows.

---

### To Close a Window

- Hold **SHIFT** and **CTRL** and press the **NUDGE▶** key.

---

## Mixing

---

The faders and other controls on the FW-1884 control 8 SONAR tracks at a time. You shift the controls to the next or previous tracks by using the ◀**BANK** and **BANK▶** keys.

---

### Controlling Master Volume

- Move the **MASTER** fader to control the master volume.

---

### To Change the Master Fader Assignment

- You can switch the master fader assignment to the next or previous virtual main output by holding down the **SHIFT** and **CTRL** key while you press either the **BANK▶** key or the ◀**BANK** key.

While **SHIFT** and **CTRL** are held down, the **BANK** indicators show which virtual master fader is assigned.

---

### To Control Track Volume

- Move the track fader to control its volume.
- Hold **SHIFT** and press the track's **SEL** to set that track's level to unity.

---

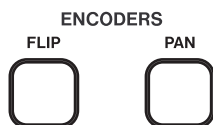
### To Control Track Pan

- 1 Press the **PAN** key in the **PAN/AUX** key group
  - 2 Move the track encoder to adjust the track's balance left or right.
- Hold **CTRL** and press **SEL** to set the track pan to center.

---

### To Flip Fader and Encoder Control

Press the **FLIP** Key. This toggles the flip on/off.



When **FLIP** is off:

- Faders control track levels.
- Encoder knobs control track pans.

When **FLIP** is on:

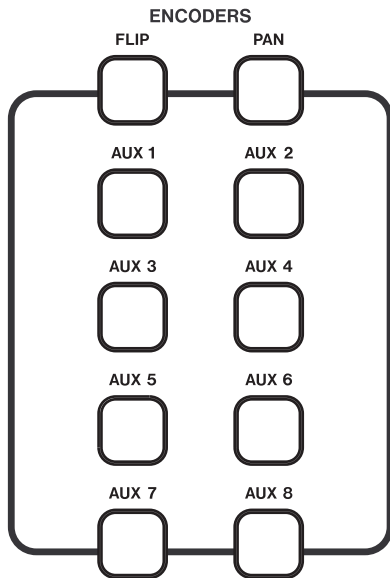
- Faders control track pans.
  - Encoders control track levels.
- When **FLIP** is on and an **AUX 1-8** key is selected:
- Faders control aux send levels.
  - Encoders control track levels.

**NOTE**

*FLIP does not flip how unity is set.*

## Aux Buses

You can use the **AUX 1-8** keys on the FW-1884 to control aux send parameters on each track for up to 8 aux buses. Select the **AUX** key (**1-8**) and then follow the steps below.



### To Control Aux Send Level on a Track

- Move the encoder to change the send level.

Hold **SHIFT** down or turn the **SHTL** key on for finer resolution.

### To Enable/Disable Aux Send on a Track

- 1 Re-press and hold down the active **AUX** key.
- 2 Press the track **SOLO** key to enable or disable aux send on that track.

### To set Pre/Post for Aux Send on a Track

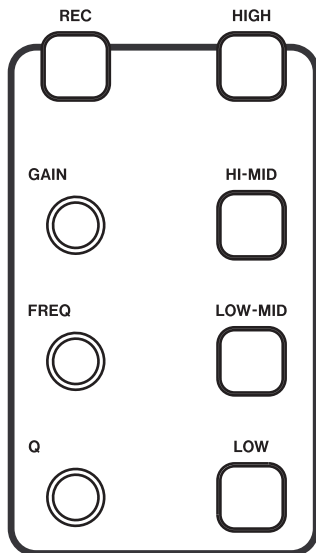
- 1 Re-press and hold down the active **AUX** key.
- 2 Press the track **MUTE** key to toggle between Pre or Post.

### To Set Aux Send Pan on a Track

- 1 Re-press and hold down the active **AUX** key.
- 2 Turn the track's encoder to adjust the pan value. Hold down **SHIFT** or turn the **SHTL** key on for finer resolution.

## Effects

The FW-1884's EQ controls (**GAIN**, **FREQ**, **Q**, and all four band selection keys) control the parameters of SONAR's FxEQ plug-in for up to 8 bands. If you have more than one instance of the FxEQ patched into a track, the FW-1884 controls only the first instance.



### To Configure the FxEQ

- 1 Patch the FxEQ into the desired track or bus. The Effect's property page appears.
- 2 Press one of the following keys to select one of the first four EQ bands:
  - HIGH
  - HI-MID
  - LO-MID
  - LOW
- 3 Use the **GAIN**, **FREQ**, and **Q** knobs to configure the selected band.
 

Pressing a band key twice accesses one of the top four EQ bands.

Hold **SHIFT** down or turn the **SHTL** key on for finer resolution.

### To Open the FxEQ Property Page

- 1 Use the **CTRL** and **◀NUDGE** or **NUDGE▶** keys to make the Track Window foremost.
- 2 Use the arrow keys to highlight the track's FxEq item. **▲/▼** selects track, **◀/▶** moves the selection in the track)
- 3 Press the **ENTER/F7** key.

# SONAR 2 (Windows) : FW-1884 Control Listings

## FW-1884 Control Listings

### Modifier Keys

There are five primary modifier keys on the FW-1884. They are used to provide additional functionality with the FW-1884 control surface keys and knobs. They are

also used to send virtual key modifiers to SONAR in order to access additional features which might normally require a keyboard.

KEY	ACTION	NOTES
<b>SHIFT</b>	Key & Control Modifier	SONAR virtual SHIFT Key
<b>CTRL</b>	Key & Control Modifier	SONAR virtual CTRL Key
<b>ALT</b>	(no surface modifications)	SONAR virtual ALT key (for menu nav) NOTE: the Windows ALT key is "sticky" and toggles the Menu bar when pressed. Press ALT again or ESC/F10 to unselect the menu.
<b>SET</b>	Transport CTRL Modifier	Used when setting values (ie. markers, loops)
<b>WRT</b>	Arm tracks for automation recording Unarm all automation record tracks	

### Surface Keys and Knobs

The following table lists the keys and knobs on the FW-1884 and what they are used for. The normal mode of operation (no modifier keys) is indicated with a "-" in the Modifier column.

In some cases what has been silkscreened on the FW-1884 differs from the functionality in SONAR. For those controls the original silkscreened name appears in parenthesis. "1" indicates default mapping.

KEY/KNOB	MODIFIER	ACTION
<b>FLIP</b>	-	Toggles Pan/Level mapping
<b>PAN</b>	-	Encoder knob adjusts Tracks pan
<b>AUX 1-8</b>	-	Encoder knob adjusts Tracks Aux send level
	(held down)	Momentarily toggles strip controls: Encoder knob – adjusts send pan SOLO – toggles send enable MUTE – toggles pre/post
<b>CONTROL PANEL</b>	-	Opens the FW-1884 Control Panel
<b>SAVE/F1</b>	-	Save current project <sup>1</sup>
<b>REDO/F2 (REVERT/F2)</b>	-	Redo last Undo <sup>1</sup>
<b>ALL SAFE/F5</b>	-	Disable Record on all channels <sup>1</sup>
<b>CLR SOLO/F4</b>	-	Unsolo all tracks <sup>1</sup>
<b>MARKER/F5</b>	-	Drop Marker at current time <sup>1</sup> (Also dropped using SET and LOCATE>>)
<b>LOOP/F6</b>	-	Toggles Loop on/off <sup>1</sup>

## SONAR 2 (Windows) : FW-1884 Control Listings

KEY/KNOB	MODIFIER	ACTION
<b>CUT</b>	–	Cut the current selection
<b>DELETE</b>	–	Delete current selection
<b>COPY</b>	–	Copy current selection
<b>PASTE</b>	–	Paste previously copied selection
<b>UNDO</b>	–	Undo most recent action(s)
<b>Encoder KNOB</b>	–	Adjust Track Pan and Sends
<b>SELECT</b>	–	Select track
	<b>WRT</b>	Arm track for automation record
	<b>REC</b>	Arm track for record
	<b>SHIFT</b>	Force fader level to unity
	<b>CTRL</b>	Force pan to center or Aux to unity
<b>SOLO</b>	–	Solo track
	<b>SHIFT</b>	
	<b>AUX 1–8</b>	Toggle track Send enable
<b>MUTE</b>	–	Mute track
	<b>CTRL</b>	Archive track (deep mute)
	<b>AUX 1–8</b>	Toggle track Send pre/post
<b>FADER</b>	–	Adjust Track levels
<b>REWIND</b>	–	Jump to previous measure
	<b>SHIFT</b>	Go to start
<b>F FWD</b>	–	Jump to next measure
	<b>SHIFT</b>	Go to end
<b>STOP</b>	–	Stop Transport
	<b>CTRL</b>	Reset SONAR
<b>PLAY</b>	–	Play
	<b>SHIFT</b>	Audio Engine On/Off
<b>RECORD</b>	–	Record
	<b>SHIFT</b>	Start automation record/write
	<b>CTRL</b>	Reject Loop Take
<b>&lt;LOCATE</b>	–	Go to Prev Marker
	<b>SET</b>	View Markers
<b>LOCATE&gt;</b>	–	Go to Next Marker
	<b>SET</b>	Set Marker

## SONAR 2 (Windows) : FW-1884 Control Listings

KEY/KNOB	MODIFIER	ACTION
<b>IN</b>	–	Go to Thru From
	<b>SET</b>	Set Thru From
	<b>SHIFT–SET</b>	Set Punch From
	<b>CTRL–SET</b>	Set Loop From
	<b>SHIFT–CTRL–SET</b>	Set Punch to/from to Selection
<b>OUT</b>	–	Go to Thru To
	<b>SET</b>	Set Thru To
	<b>SHIFT–SET</b>	Set Punch To
	<b>CTRL–SET</b>	Set Loop To
	<b>SHIFT–CTRL–SET</b>	Set Loop to/from to Selection
<b>&lt; BANK BANK &gt;</b>	–	L/R 8 tracks
	<b>SHIFT</b>	L/R 1 track
	<b>SHIFT–CTRL</b>	L/R 1 virtual master fader
<b>SHUTTLE</b>	–	Toggles encoders and scrub wheel between coarse and fine resolution
<b>DATA WHEEL</b>	–	Scrub at shuttle key rate
	<b>SHIFT</b>	Scrub at finer rate
<b>REC</b>	<b>SELECT</b>	Arms selected track for record
	<b>SHIFT</b>	Clear all records
<b>READ</b>	–	Toggle Read Automation
<b>WRT</b>	–	Record Automation Modifier
<b>TCH</b>	–	Snapshot
<b>LATCH</b>	–	Offset Mode

<sup>1</sup> using default function key mapping



# SONAR 2 (Windows) : FW-1884 Control Listings

## Virtual Keyboard Keys

In addition to sending virtual key strokes to SONAR for **SHIFT**, **CTRL**, and **ALT** the FW-1884 also sends virtual key strokes for the cursor and **NUDGE** keys.

The cursor keys are just like a computer keyboard's arrow keys, so any action (modified or not) that works on the PC keyboard with SONAR will also work using the FW-1884 cursor keys and key modifiers. A few

examples: **CTRL** + **▲/▼** keys zoom the track display vertically, **CTRL** + **◀/▶** keys will zoom the track timeline horizontally, and **ALT** + **▲/▼** will zoom the track waveform vertically.

The **◀NUDGE** and **NUDGE▶** keys are equivalent to a computer keyboard's **SHIFT-Tab** and **Tab**, and are useful for navigating in dialog boxes and among windows.

KEY	MODIFIER	Default ACTION
<b>Cursor Keys</b>	–	Same as SONAR keyboard arrows
	<b>CTRL</b>	Same as SONAR's CTRL-ARROWS
	<b>SHIFT</b>	Same as SONAR's SHIFT-ARROW
	<b>CTRL-SHIFT</b>	Same as SONAR's CTRL-SHIFT-ARROWS
<b>◀NUDGE</b> <b>NUDGE▶</b>	–	Dialog Navigation Prev/Next
	<b>CTRL</b>	Window Navigation Prev/Next

## Re-Configurable Function Keys

The following keys can be reconfigured using the FW-1884 Property Page. Each key has three possible short-cuts which can be assigned to it. One for normal key presses, one for **SHIFT**-key presses, and one for **CTRL**-key presses.

Some of the function mapping has been configured by default. All of these mappings can be customized for your specific preferences and setup, collections of them may also be named and saved for later recall.

FUNCTION KEY	MODIFIER	DEFAULT ACTION
<b>SAVE/F1</b>	–	Save
	<b>SHIFT</b>	Save As
	<b>CTRL</b>	Print
<b>REVERT/F2</b>	–	Redo
	<b>SHIFT</b>	Select All
	<b>CTRL</b>	Select None
<b>ALL SAFE/F3</b>	–	All Safe
	<b>SHIFT</b>	
	<b>CTRL</b>	
<b>CLR SOLO/F4</b>	–	Clear Solos
	<b>SHIFT</b>	Clear Mutes
	<b>CTRL</b>	Clear Solos
<b>MARKER/F5</b>	–	Insert Marker
	<b>SHIFT</b>	
	<b>CTRL</b>	

## SONAR 2 (Windows) : FW-1884 Control Listings

FUNCTION KEY	MODIFIER	DEFAULT ACTION
LOOP/F6	–	Loop Toggle
	SHIFT	
	CTRL	
F7	–	Enter Key
	SHIFT	
	CTRL	
F8	–	Space Key
	SHIFT	
	CTRL	
F9	–	Cancel Key
	SHIFT	
	CTRL	
F10	–	Escape Key
	SHIFT	
	CTRL	
Footswitch	–	Record
	SHIFT	
	CTRL	

# TASCAM

TEAC Professional Division

# FW-1884

## TEAC CORPORATION

Phone: +81-422-52-5082  
3-7-3, Nakacho, Musashino-shi, Tokyo 180-8550, Japan

[www.tascam.com](http://www.tascam.com)

---

## TEAC AMERICA, INC.

Phone: +1-323-726-0303  
7733 Telegraph Road, Montebello, California 90640

[www.tascam.com](http://www.tascam.com)

---

## TEAC CANADA LTD.

Phone: +1905-890-8008 Facsimile: +1905-890-9888  
5939 Wallace Street, Mississauga, Ontario L4Z 1Z8, Canada

[www.tascam.com](http://www.tascam.com)

---

## TEAC MEXICO, S.A. De C.V

Phone: +52-555-581-5500  
Campeños No. 184, Colonia Granjes Esmeralda, Delegación Iztapalapa CP 09810, Mexico DF

[www.tascam.com](http://www.tascam.com)

---

## TEAC UK LIMITED

Phone: +44-1923-438880  
5 Marlin House, Croxley Business Park, Watford, Hertfordshire. WD1 8TE, U.K.

[www.tascam.co.uk](http://www.tascam.co.uk)

---

## TEAC DEUTSCHLAND GmbH

Phone: +49-611-71580  
Bahnstrasse 12, 65205 Wiesbaden-Erbenheim, Germany

[www.tascam.de](http://www.tascam.de)

---

## TEAC FRANCE S. A.

Phone: +33-1-42-37-01-02  
17 Rue Alexis-de-Tocqueville, CE 005 92182 Antony Cedex, France

[www.tascam.fr](http://www.tascam.fr)

---

## TEAC AUSTRALIA PTY.,LTD. A.B.N. 80 005 408 462

Phone: +61-3-9672-2400 Facsimile: +61-3-9672-2249  
280 William Street, Port Melbourne, Victoria 3000, Australia

[www.tascam.com.au](http://www.tascam.com.au)

---

## TEAC ITALIANA S.p.A.

Phone: +39-02-66010500  
Via C. Cantù 11, 20092 Cinisello Balsamo, Milano, Italy

[www.teac.it](http://www.teac.it)

---