

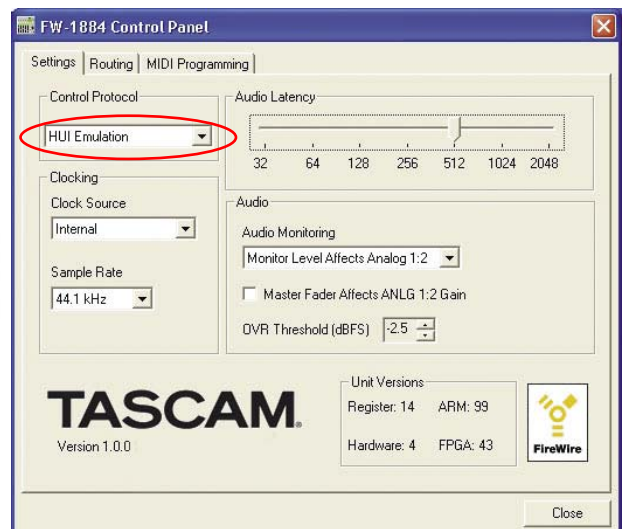
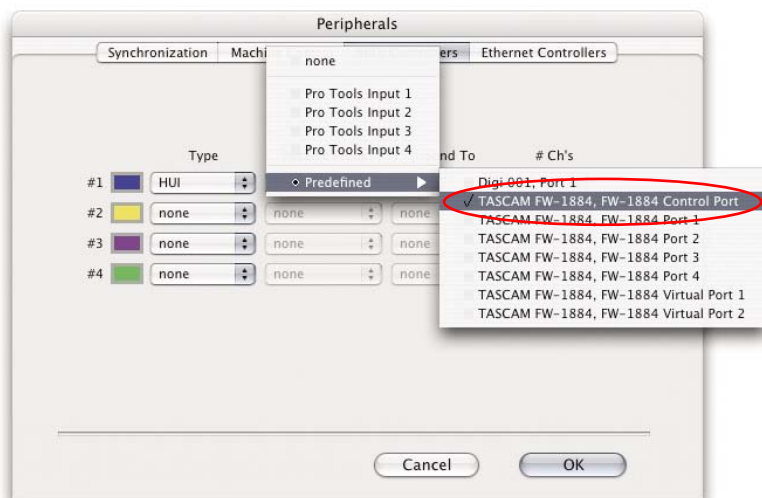
The FW-1884 adds three functions to a Pro Tools setup – fader and transport control through HUI emulation, eight additional mic pres with digital outputs and a four-in/four-out MIDI interface. Here's how you set up this device to get the most out of it in Pro Tools.



Pro Tools Controller Setup

The FW-1884 gives you eight moving faders, encoders assignable to panning and aux control, and transport controls in Pro Tools. Before using it with Pro Tools, you have to install a driver that supports the Mackie HUI, which the FW-1884 emulates:

1. Locate your Pro Tools install disc. Find the folder called Unsupported Software, and inside that you'll find Legacy Controllers. The Mackie HUI driver should be in here. If you can't find your Pro Tools install disc, you can download the driver from the Digidesign® website at this address: www.digidesign.com/download/controllers/
- 2a. On Mac OS X, install this file into the following location: Applications/Pro Tools/Controllers/
- 2b. If you're using a Windows system, install these files into this location: C:\Program Files\Common Files\Digidesign\DAE\Controllers\
3. Put the FW-1884 into HUI Emulation mode. To do this, press the Control Panel button on the FW-1884's front panel. Select "HUI Emulation" in the pop-up window that opens. Press the *Computer* mode button on the FW-1884
4. Start Pro Tools. Under the "Setups" menu, choose "Peripherals..." and select the "MIDI Controllers" tab. You should see a window like the one below.
5. Set the Type of controllers #1 to HUI. Set HUI #1 to receive from FW1884CtlPort and send to FW1884CtlPort.
6. If your plug-ins and soft synths support MIDI control, you can send MIDI controller data to Pro Tools. Press the *MIDI Control* button on the FW-1884 to send MIDI controller data, then press the *Computer* button to get back to HUI mode. See your FW-1884 manual for more information.



Using the Eight Mic Preamps

The FW-1884 provides eight microphone preamps which can be digitally output in ADAT Optical format. This brings the number of mic preamps on a Digi 002 Rack® to twelve, enough to record large ensembles. You can also use four microphone preamps output in 96kHz for even better quality. This is the best way to tap into these extra mic inputs:

1. Connect the ADAT Optical Output of the FW-1884 to the ADAT Optical Input of your Digidesign audio interface. Connect the ADAT Out of your Digidesign interface to the ADAT Input of the FW-1884.
2. Press the Control Panel button on the FW-1884. Click the *Settings* tab in the window that opens. Set the Clock Source to *ADAT Optical*.
3. Click on the *Routing* tab, then click on the *Optical Output Source* pulldown menu. Select *Analog 1-8 (ADAT)* from this menu.
4. In Pro Tools, set a track's input source to the interface's ADAT Optical Inputs.



Using the MIDI I/O in Pro Tools

After installing the FW-1884 drivers, its four MIDI inputs and outputs show up as a 4x4 MIDI interface on your computer. These inputs and outputs should appear in Pro Tools as “FW-1884 Port 1,” “FW-1884 Port 2,” etc. If you don’t see any MIDI I/O in Pro Tools, reinstall the FW-1884 drivers or check the Pro Tools Reference Manual.

