



DM-24 HUI emulation with Digital Performer

Make sure that your DM-24 MIDI I/O is connected to your MIDI interface properly. Then make sure that you have made the proper settings in Free MIDI or OMS for the DM-24. This example shows the DM-24 connected to a Digi 001 as the MIDI interface.



As a device:
Manuf: Mackie
Model: other
Device ID: 0
Name HUI
Receives MTC is checked
Is Controller is checked
Receives on CH 1

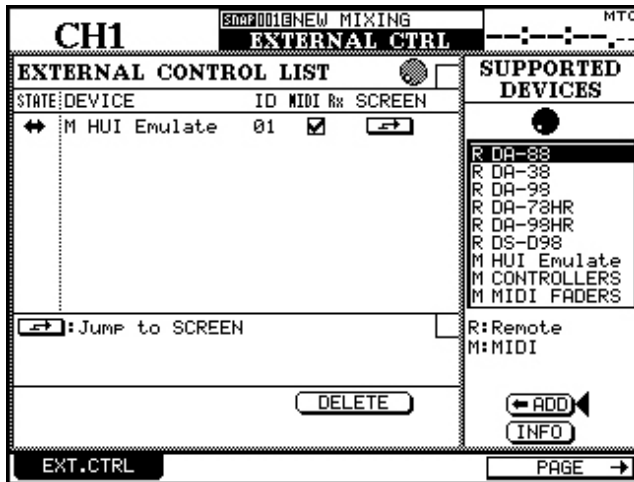
In Digital Performer under BASICS, choose TRANSMIT SYNC. This will allow you to sent MTC to your DM-24 MIDI input port. This is needed if you wish to use the DM-24 internal automation. If not, ignore this setting.

In Digital Performer under BASICS, choose CONTROL SURFACE SETUP.

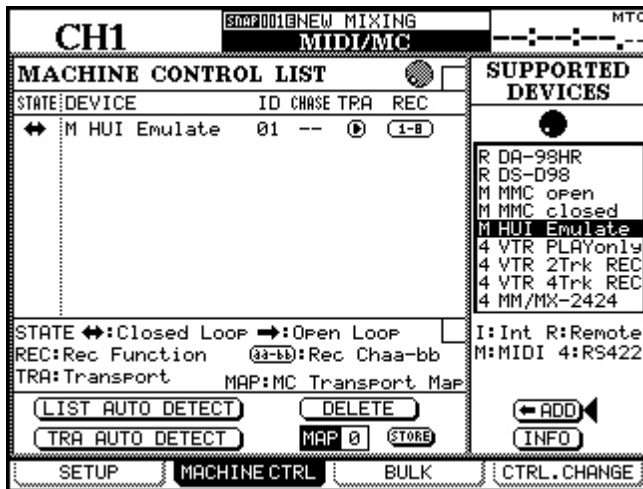


Make sure you make the proper settings for your MIDI ports here.

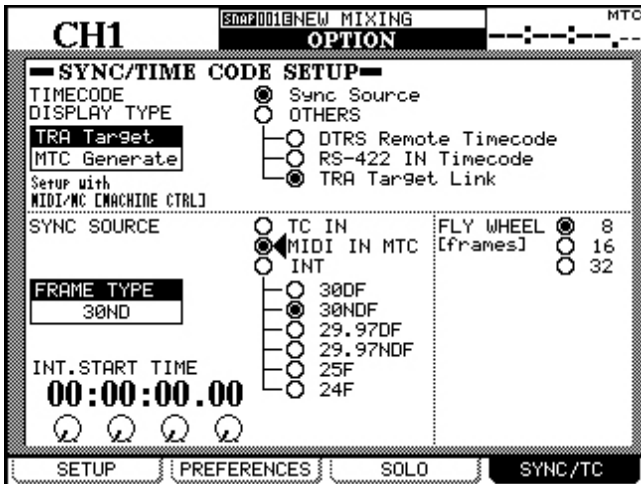
On the DM-24 EXTERNAL CONTROL page.
Add HUI EMULATE under the supported devices list.



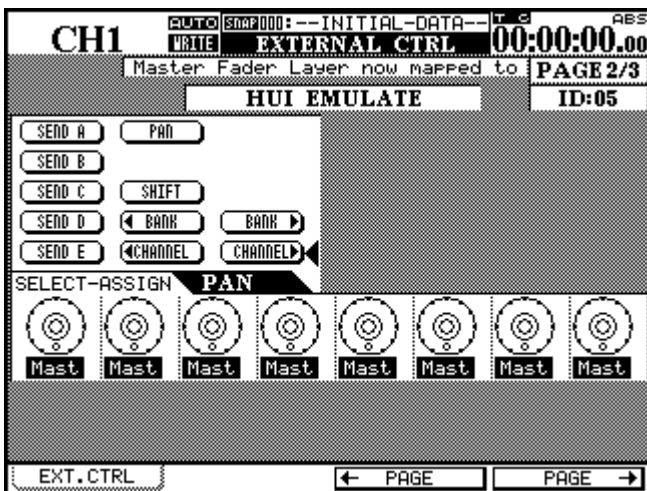
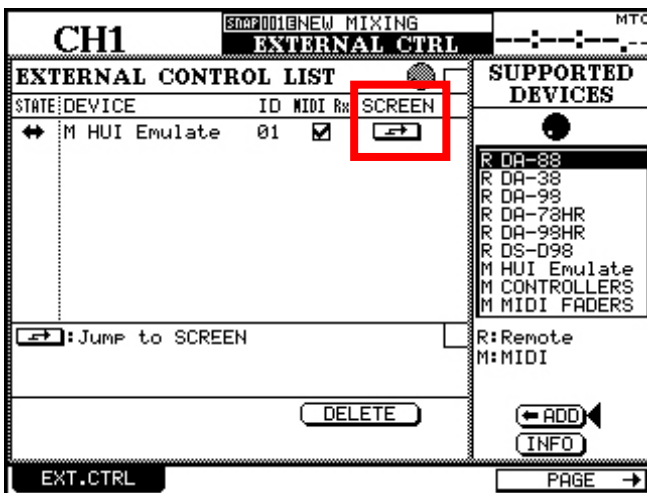
On the MACHINE CONTROL page also add
HUI EMULATE. Make sure your settings are as such:
ID 01 TRA checked and REC 1-8.



On the OPTION-SYNC/TC page choose SYNC SOURCE and MIDI IN MTC.
This allows the DM-24 automation to be triggered by the MTC sent from Digital Performer.



On the DM-24 EXTERNAL CONTROL page use the cursor to point to the JUMP TO SCREEN icon and press ENTER. This will take you to the HUI control screen.



SEND A-E refer to aux sends.

If you point to A and press ENTER the encoders on the LCD will show you all of the levels for the first aux send on the channels viewed.

Using the cursors you can highlight the encoder area and adjust them 4 at a time.

Pressing SHIFT flips the aux send controls from the POD knobs to the faders.

This allows you to control the aux sends 8 at a time with touch sensitive faders.

When PAN is solid it will show you the pan settings for all channels viewed on the encoders on the LCD screen. Press ENTER and PAN will flash. This simply removes PAN control from the POD knobs.

Moves made with the HUI emulation are recorded in Pro Tools automation, NOT with the DM-24 automation. MTC sent from Pro Tools is used to trigger the DM-24's internal automation. This is helpful if you are running audio in to the DM-24. If you are ONLY using the DM-24 as a "control surface" and mixing in Pro Tools, the MTC going to the DM-24 is not needed.

The small print

HUI is a registered trademark of Mackie Designs Inc. Digital Performer is a registered trademark of Mark of the Unicorn and its subsidiaries and divisions.

The DM-24 provides basic HUI functionality.

Faders, pans, mutes, track arming, aux sends, transports, banking in groups of 8 and individual channel banking.

The DM-24 does NOT provide all the features of a Mackie HUI.