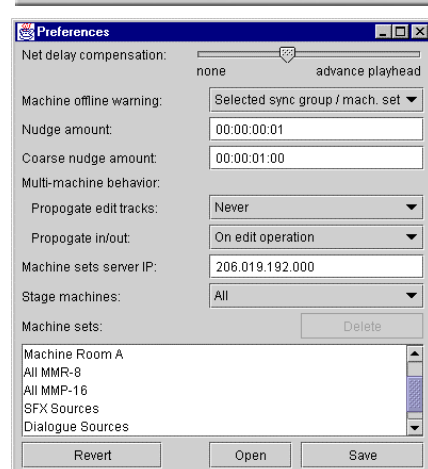


- File Utilities**
- Open From File Menu
  - Lists all available Projects by name, shows [SCSI ID, format]
  - Double click Project folder to view tracks
  - Click to select Project or track then click any process button
  - Choose Backup, Rename, Export, TapeMode Convert, Delete
  - Select target disk, name, etc. from dialogue
    - Rename changes name of Project (not tracks)
    - Backup makes copy (usually to another disk)
    - Export allows file format change, new name
    - TapeMode Convert makes TapeMode copy of Project
    - Delete only erases Project EDL
  - Use Cleanup from Machine Settings 700 bank to delete media

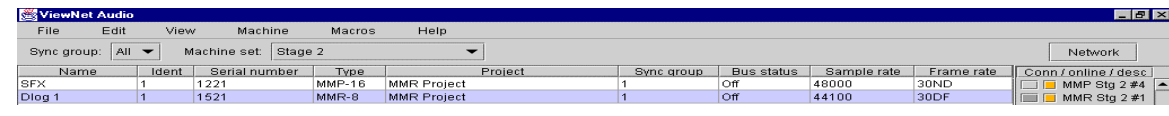


- Machine Settings**
- Select machine in Network Screen, open from Machine Menu
  - Allows for setting all MM Setup menu parameters
  - Click on Tabs to view Setup menu banks
  - Select choice under “Applies to” at bottom for:
    - Named machine, Sync group, Machine group
  - Click “Apply changes” to update only changed settings
  - Click “Apply all” to send all settings
- Settings Banks:**
- |                 |                 |                    |
|-----------------|-----------------|--------------------|
| 000 Basic Setup | 400 Remote      | 800 Tracks/Project |
| 100 Bus Control | 500 Audio       | 900 System         |
| 200 Transport   | 600 Digital I/O |                    |
| 300 Biphase     | 700 Disk        |                    |

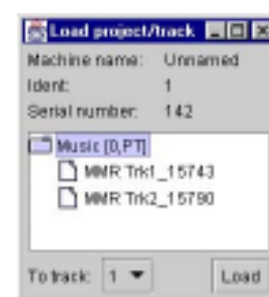


- Preferences**
- Open Preferences from File Menu
  - Net Delay Compensation to adjust playhead / sound sync
  - Machine Offline Warning preference settings
  - Nudge amount setting
  - Coarse Nudge amount setting
  - Multi-Machine mode behavior settings
    - Propagate Edit track settings
    - Propagate In/Out mark settings
  - Machine Sets Server IP address
  - Stage Machines pre-filter
  - List of all Machine sets with option to Delete selected
  - Open, Save user Preferences to disk
  - Revert to default ViewNet system Preferences

- Setting up ViewNet**
- Install the ViewNet Network Interface Card in the MM unit
  - Install Version 4.0 or higher MM software, set the MM IP address (Setup Menu 950), reboot MM
  - Install the ViewNet Audio application on host computer from CD-ROM
  - Set up TCP/IP networking on computer with installed NIC (see computer manual for details)
  - Connect the computer and MM unit via 100BaseT Ethernet cable – use hub for multiple units
    - Use Cat 5UTP Ethernet patch cable with Ethernet 10/100 hub
    - Use Ethernet crossover cable if directly connecting 1 computer and 1 MM unit
  - Run the ViewNet application



- Network Screen**
- ViewNet Audio always opens first to Network screen
  - Shows all machines from selected Sync Group/Machine Set currently operating and connected
  - Columns list important settings and parameters for each machine
  - Parameter Settings can only be changed through Machine Settings window (Machine menu)
  - To select machine, click anywhere on settings information row, use shift or control for multiple
  - Click Network button when in Project View to return to the Network screen
  - System Status Panel at right shows active connection/online status/ short description
  - Click Conn box to open Project View screen for machine
    - Gray shows last machine with active connection
    - Blue shows machines with currently active connection
  - Click Online box to toggle online status
    - Black shows offline
    - Orange shows online
    - Green shows unit has transport sync locked to external source
    - Red shows machine transport sync locked to external source and machine in record
  - Select machines then choose “Define Set...” from File menu to name Machine Set
  - Use Machine Information window (Machine menu) to enter description and machine name



- Load project/track**
- Open from File Menu or folder icon in Project View screen
  - List shows all available Projects by name in alpha-numeric order
  - [SCSI ID, format] after Proj name (no SCSI ID shown for WaveFrame)
  - Double click Project folder to see tracks
  - Click to select Project or track for loading
  - Choose MM track destination from drop down list
  - Click Load button to load

### Project View Screen

#### Transport Controls

Activate transport functions plus toggle the online status and loop functions

#### System Status Panel

Shows list of machines on network and their connection and online status

#### Project Overview

Shows overview of entire project, indicates head and tail time, permits navigation

#### Machine Status Information

Shows status information about machine – use Machine Settings window to change

#### Track Function and Information Panel

Panel shows track name and controls for Load, Slip, Monitor, Input, Record, Edit

#### Time Registers and Displays

Displays time locations - buttons permit capturing and storing times

#### Time Ruler and Marks

Ruler shows time range and location of In, Out, Memory, and Playhead marks

#### Project EDL View

Shows location & fades for all clips plus overlay of Pro Tools gain & mute data

#### Cursor Function Selection

Sets function of cursor for operations in the project EDL view

#### Edit Buttons

Allow quick access to most common edit functions, see Edit menu for more

#### Navigating in Project View:

- Drag in Project Overview to set view region
- Drag with Magnifying glass cursor in Project EDL View Panel to zoom
- Shift + Click with magnifying glass cursor to zoom out

#### Capture and Store Current Time:

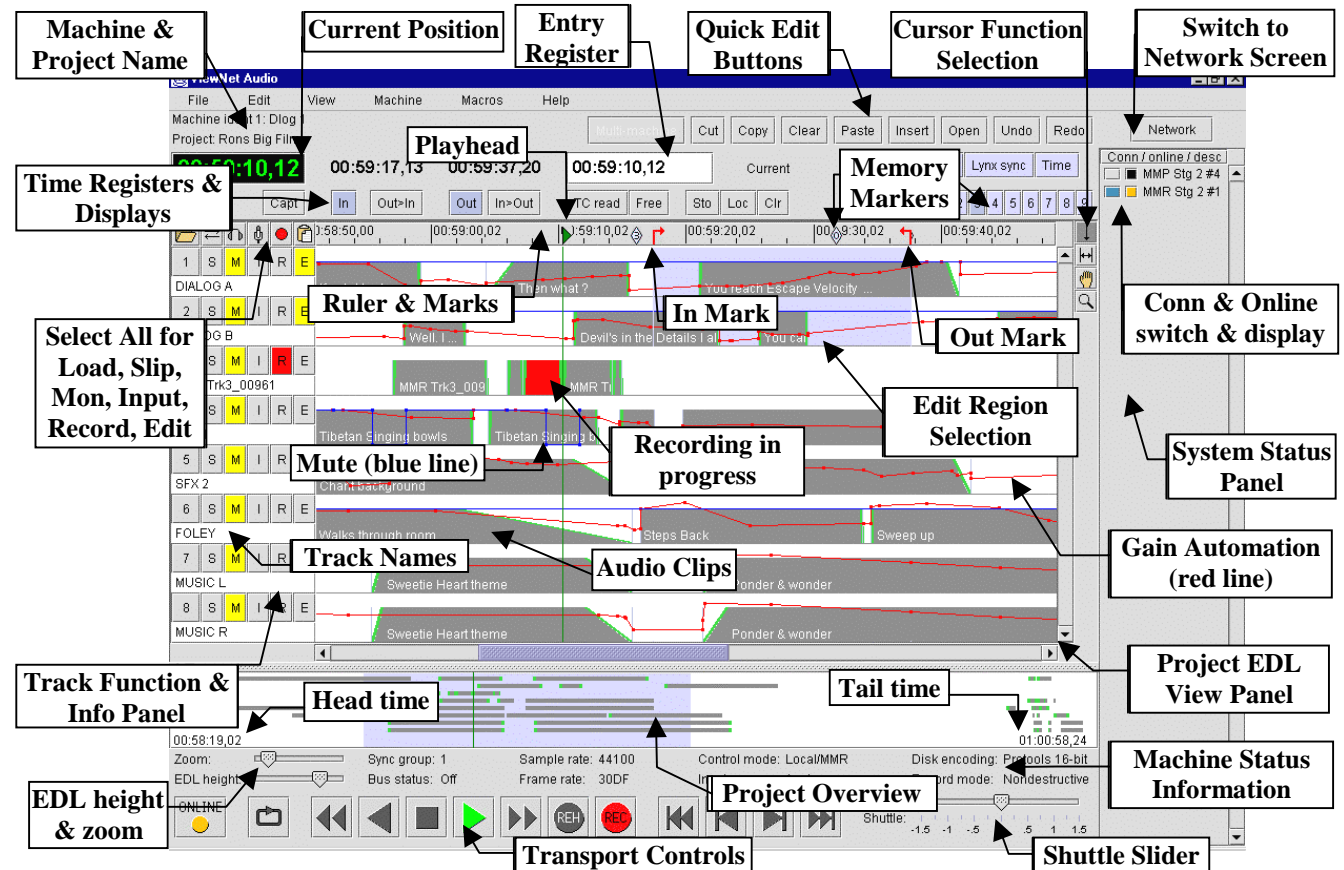
- Click Capt button to grab current time
- Click any blue time register button to store

#### Entry Register and Time Registers:

- Current function of Entry Register displayed at right of entry box
- Click any time register to make it the active Entry register function & number
- Loc button puts playhead at number shown in Entry Register
- Press Sto button then destination time register to copy and paste time
- Click in Entry register and use numbers keys to Enter numbers directly
- Press Return to activate change of numbers in Entry Register

#### Editing:

- Select region using In & Out registers or drag with In/Out Cursor
- Select tracks to edit with Edit select buttons in Track function panel
- Select Edit functions with Quick Edit buttons or Edit menu items



#### Cursor Function Selection

- Click to Place mark selected in Entry Register (Current, In, Out, Memory)
- Drag to set In and Out marks
- Click on clip to select; Shift+Click multiple
- Magnifying glass – drag in project to zoom  
SHIFT + Click to zoom out

#### Track Function and Info Panel

- Top row selects all tracks for function
- Folder opens Load Project/Track window
- S is for setting track Slip – use with Entry Register
- M is for Monitor (headphone & back panel Mon)
- I is for setting track to Input monitor
- R is for track Record arm (solid during record)
- E is to select track for Editing or Unload
- Track name shown below function select keys

#### Common Keyboard Shortcuts (incomplete list)

Play	Stop	Capt	Rev Play	Sto	Locate	In	Out	Current	Zoom In	Out	Nudge L	R	Next	Prev
→	↓	↑	←	S	L	I	O	C	Z	Shift+Z	- or _	= or +	>	<