

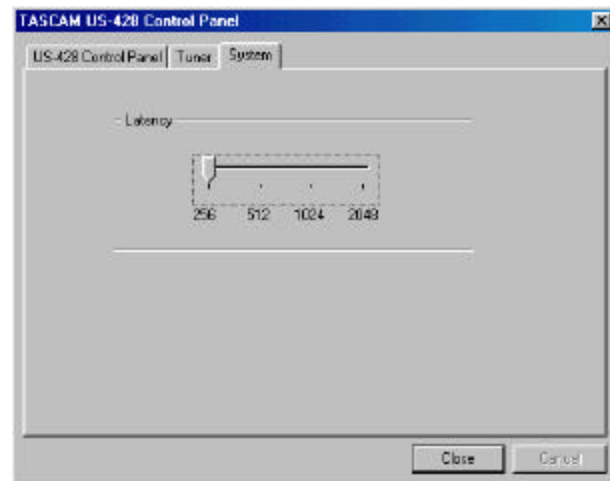
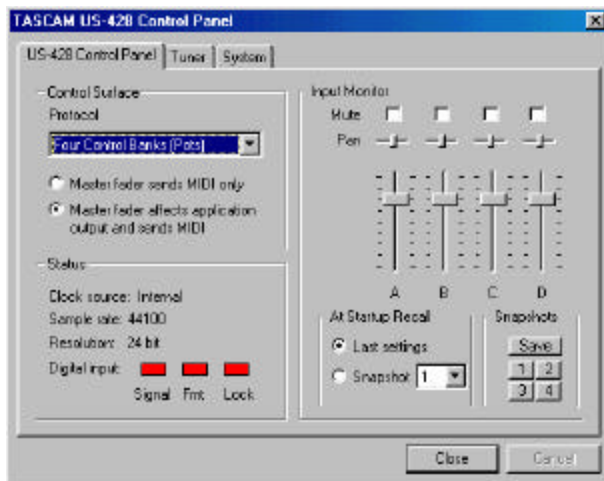


## Using the US-428 with Propellerhead's Reason

This guide will show you how to use the TASCAM US-428 as the audio output and control input for Propellerhead's Reason software synthesizer. It assumes that you have version 3 drivers (or newer) for the US-428 installed, and is based on version 1.0.1 of Reason. For more on Reason, please go to [www.propellerheads.se](http://www.propellerheads.se). The screenshots used here are from a PC, but the Mac versions are essentially identical.

Mac Only Note: To use the US-428 for Reason's audio output, make sure you have copied your current US-428 ASIO drivers into the "ASIO Driver" folder where the Reason program is located.

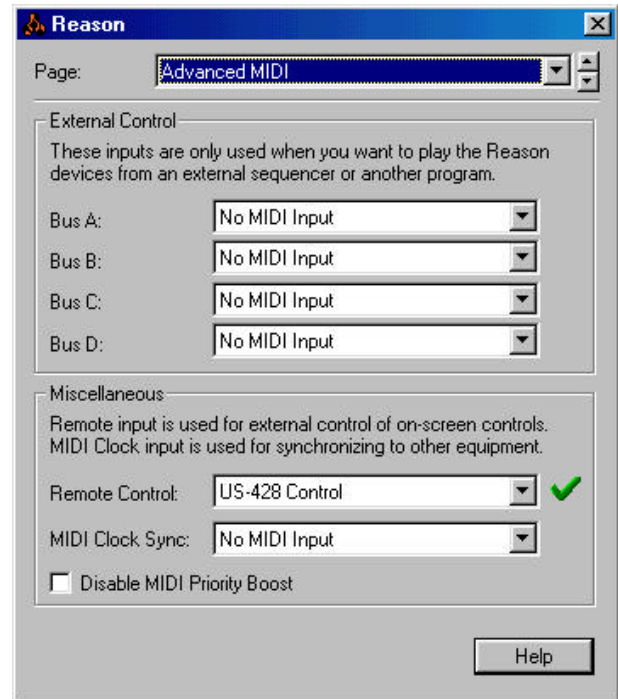
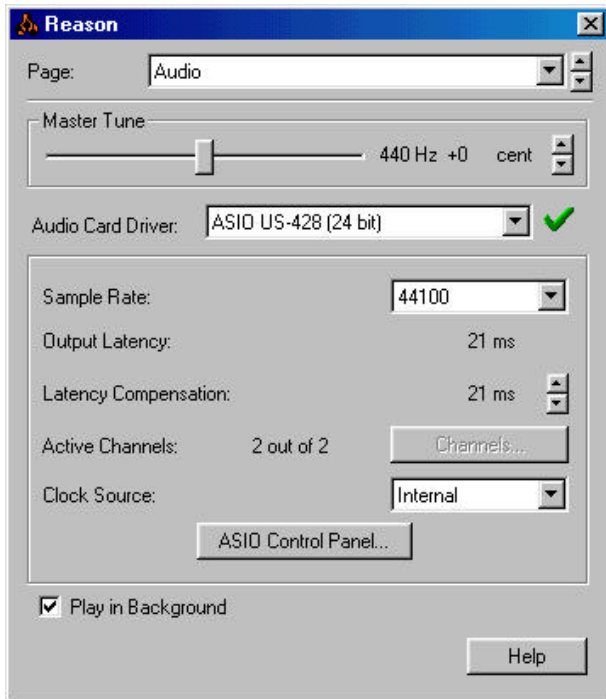
Bring up the US-428's control panel, and select "Four Control Banks (Pots)" under Control Surface/Protocol. This protocol is recommended since it gives you *lots* of virtual controls that Reason can understand, namely 33 faders, 96 knobs, and 71 buttons. Please see separate documentation on this control protocol for details on its use.



If you intend to control Reason's master mixer fader from the US-428 (using the 428's master fader, or any other continuous control), the select "Master fader sends MIDI only." Otherwise select "Master fader affects application output and sends MIDI."

Next, go to the “System” tab of the control panel. In most computer set-ups, you will be able to run at the lowest latency with Reason. This depends on your computer, and on the complexity of your Reason performance. If you notice any click-like distortion in your output from Reason, you should try quitting Reason, increasing the latency setting in the control panel, and then restarting Reason.

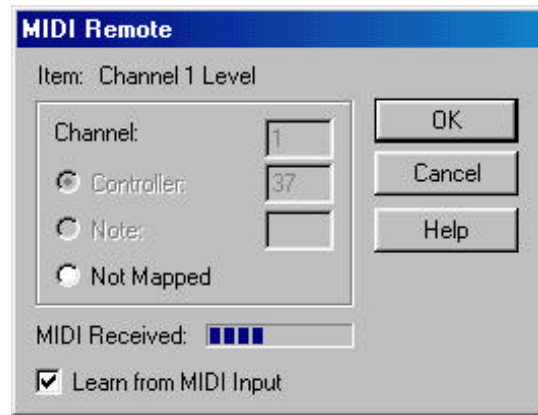
Start Reason and select the Edit/Preferences... menu item. Now select the “Audio” page. Under “Audio Driver” select “ASIO US-428 ASIO Driver...” either the 24-bit or 16-bit version. Also set your sample rate.



Now go to the “Advanced MIDI” page of the Preferences, and select “US-428 Control Port” under “Remote Control.” This tells Reason to receive US-428 control surface input to control Reason knobs, faders, and buttons. You can now close the Preferences window.

Under the Options menu, make sure that “Enable MIDI Remote Mapping” is checked, or select it once if it isn’t. This lets control surface input affect the Reason controls. To set-up the mapping between US-428 buttons, faders, and knobs, and the virtual Reason controls, make sure that “Edit MIDI Remote Mapping” under the Options menu is also checked.

To map a US-428 control to a particular Reason control, first use your mouse to click on the control. The “MIDI Remote” window will pop up. The first time you do this in a session, you will need to check the “Learn from MIDI” box. Now simply move the US-428 control you want to use (fader, knob, button) and Reason will automatically identify it and map it to the Reason control the you previously selected. You can select “OK” and now Reason’s screen will show the channel number and controller/note number over the newly-mapped screen control.



Once we have set-up all the controls, you can uncheck Options/Edit MIDI Remote Mapping (which will leave the screen cleaner). You can also save this set-up file and use it as a template for other projects.