



Using the US-428's Chromatic Tuner

Open the US-428's control panel and select the "Tuner" tab.

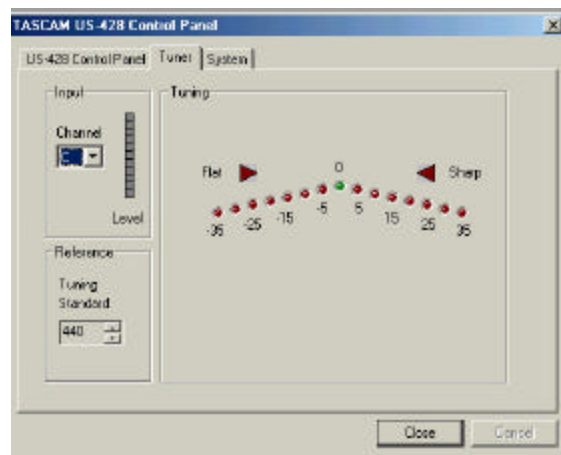
In the "Input" section, select the US-428 input channel that you want to tune (A, B, C, or D).

Play a note and adjust the trim knob for that input until the signal is strong, but not clipping.

The "Level" meter on the screen should display bright green segments without lighting the top red segment.

If desired, you can change the Tuning Standard in the "Reference" section. Normally, the Tuning Standard is set to 440 cycles per second for a middle "A" note, but you can use the up/down arrows to change it to a number between 430 and 450 cycles per second.

As you play, the detected note will be displayed below the Tuning lights (A# or E, for example). If the note is sharp, the "Sharp" arrow and a Tuning light to the right of '0' are bright red; if the note is flat, the "Flat" arrow and a Tuning light to the left of '0' are bright red. The numbers below the tuning lights indicate how far out of tune the note is, in cents (100 cents is one semitone). When the note is in tune, the center '0' light and both the Flat and Sharp arrows are bright green.



Note: The chromatic tuner consumes some CPU bandwidth in your system. Therefore, when you finish using the tuner, we recommend that you either select another control panel tab or close the control panel.