

TASCAM

D008893-10B

TEAC Professional Division

DM-3200

DM-4800

Digital Mixing Console

TMCompanion SOFTWARE GUIDE

1 – Introduction and installation

Installation (Windows)	3
Repairing and uninstalling TMCompanion	4
Installation (Mac OS X)	4
Uninstalling TMCompanion	4
Copyright, etc.	4

2 – Using TMCompanion

Backup and restore	5
Timecode/Transport window	6
Meter bridge	6
Firmware update	7
Screen shot	7

3 – Preferences

MIDI Time Code	8
Window settings	8
Confirmations	8
Settings	8

1 – Introduction and installation

The TASCAM Mixer Companion (or “TMCompanion”) is software for Microsoft Windows XP or Apple Computer’s Mac OS X, allowing the following operations to be carried out on the TASCAM DM-4800 and DM-3200 digital mixing consoles (referred to in this manual as “TASCAM DM”) from the host computer, using a USB connection for 2-way operation:

- Management of projects, allowing storage and archival of projects on the host computer, and restoration to the TASCAM DM.
- On-screen metering for channels, busses, aux sends, and the main stereo buss.
- Firmware updates to the TASCAM DM are carried out through TMCompanion.
- A timecode display and on-screen transport controls mirroring those of the TASCAM DM can be used.
- A screen shot of the TASCAM DM can be downloaded and stored as a PNG (Portable Network Graphics) file on the host computer.

Installation (Windows)

A computer capable of running Windows XP, with at least one USB port, is required to run the program.

It is strongly recommended that Windows XP Service Pack 2 (SP2) is installed prior to installing TMCompanion (this provides better and more stable MIDI drivers than earlier versions). This Service Pack (English version) is provided on the TMCompanion CD-ROM.

When the CD-ROM is inserted, the autoplay process opens a window providing the option to install TMCompanion or SP2, read the release notes, install Adobe Acrobat Reader or visit the TASCAM Web site to look for updates and further release notes, etc.

NOTE

If SP2 is to be installed, this should be done before TMCompanion is installed.

- **When installing TMCompanion, a confirmation panel appears, followed by a standard Windows installation program:**

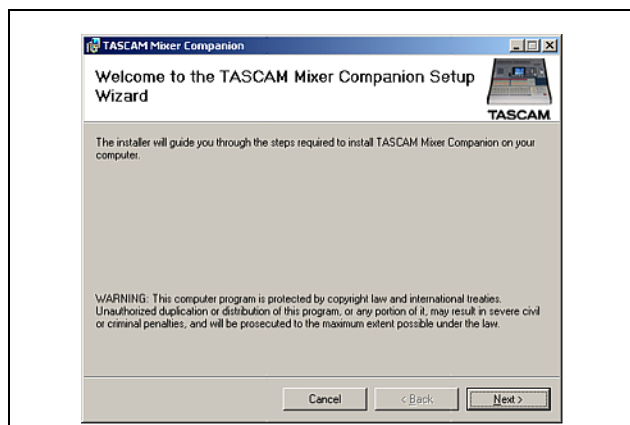


Figure 1: Installation start screen

- **Press Next> to move to the next screen, which sets out the licensing terms and conditions. Read these, select I Agree, and press Next>.**
- **Choose the folder in which the program will reside. The default folder C:\Program Files\TASCAM is one in which other TASCAM applications (e.g. GigaStudio) reside, so it is a good idea to leave the default settings here.**

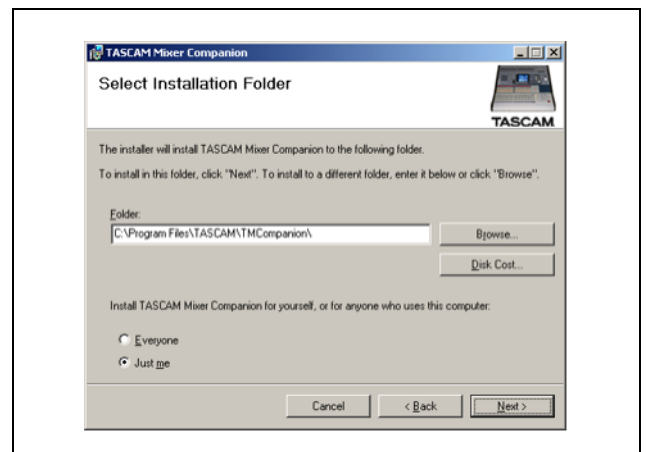


Figure 2: Destination folder selection

- **After a few more confirmation screens, the program will then install.**
- **Following the installation, there will be a new TASCAM group in the Start menu, with the TASCAM Mixer Companion as a sub-item in it.**

Other items (e.g. Adobe Acrobat Reader) can then be installed as required.

1 – Introduction and installation : Installation (Mac OS X)

Repairing and uninstalling TMCompanion

To uninstall the software, run the SETUP.EXE program from the CD-ROM:

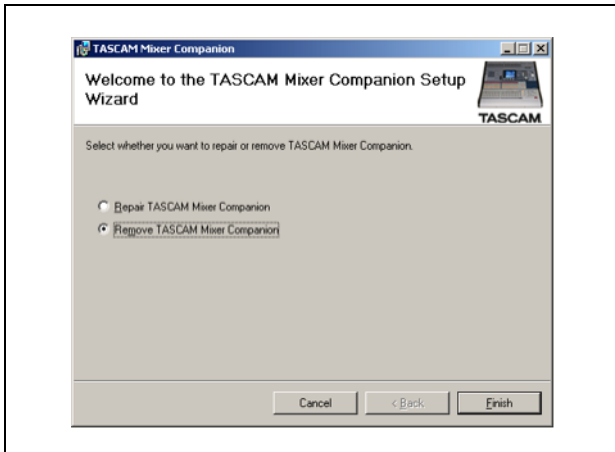


Figure 3: Uninstalling the software

Note that this option also allows reinstallation of damaged components (Repair).

Alternatively, the Control Panel's Add/Remove Programs item can be used to remove the TMCompanion software in the usual way:

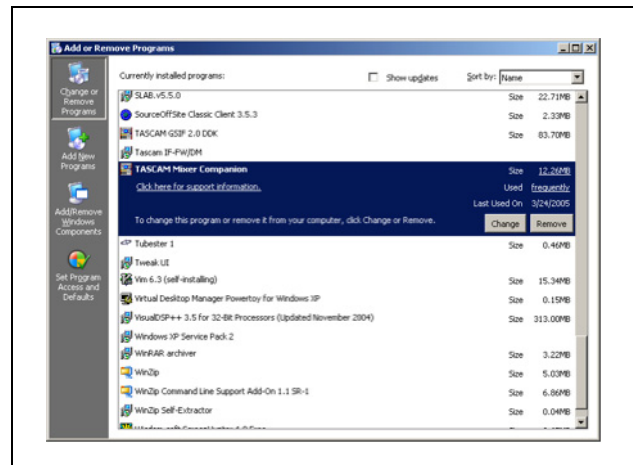


Figure 4: Using the Control Panel to remove the TMCompanion software

Installation (Mac OS X)

A computer running OS X 10.3 or above is required.

- **Insert the CD-ROM into the drive. A CD icon labeled “DM Series” appears. Open this disc.**
- **Double-click the installer package to launch the standard OS X Installer program.**

- **When the installation is complete, you will see a program called TMCompanion in the Applications folder.**
- **If you download the Installer from the TASCAM Web site, it will be in the form of a disk image (.dmg) file, which should be attached and used in the usual way.**

Uninstalling TMCompanion

Simply drag the TMCompanion application to the Trash (or press Command-Delete).

Copyright, etc.

Windows and Windows XP are trademarks of Microsoft Corporation.

Macintosh, Mac OS, and Mac OS X are trademarks of Apple Computer.

Make sure the TASCAM DM is connected to the computer and turned on. Double-click the application to start it.

If you launch TMCompanion with a TASCAM DM is not connected, you can run the program in offline mode, but it will not enable you to do very much.

The application will also automatically quit, displaying a warning message panel if the connection to the TASCAM DM is broken while the software is running.

Backup and restore

The different functions of the software are accessed through the main window, which appears when the software is launched.

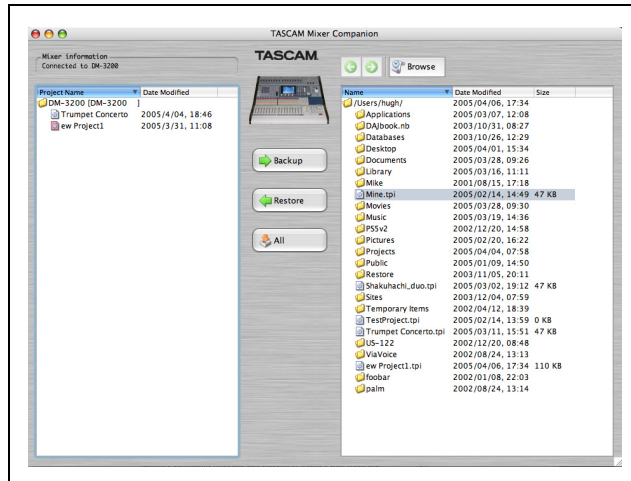


Figure 5: TMCompanion Main screen

The left view lists the projects stored in the CF card of the TASCAM DM (the currently active project has a red icon).

The right view is a file browser for the host computer. Use the Browse button to select a working folder (the arrow buttons work like Web browser buttons to go backwards and forwards through the navigation history).

Selected folders can be stored as favorites by using the Add Current Folder option from the pull-down menu accessed by clicking the Browse button.

The Remove All Favorites option clears the list of favorite folders.

Projects stored on the computer are named as xxxxx.tpi (TASCAM Project Image).

This main window can be shown by using the Window -> Main Window menu item.

To back up a file to the host computer

Use the methods described above to select the destination folder.

Select a project on the TASCAM DM (left view) and drag it into the right view. Confirmation can be switched on and off through the application preferences (see below).

Alternatively, double-click the file, or use the Backup button.

If the current project is selected, the last version of this project stored on the CF card will be copied to the computer.

Multiple files can be selected and moved between the TASCAM DM and the host computer.

To restore a file from the host computer

Use the right view to navigate to the folder on the host computer containing the project.

Select a .tpi project file from the list of files in the right column.

Either drag and drop the file into the left column (TASCAM DM), or double-click it, or use the Restore button to move the file.

Multiple files can be selected and moved between the TASCAM DM and the host computer.

Note that you can rename a project on the host computer, and this name will be used when you restore the project to the TASCAM DM.

2 – Using TMCompanion : Timecode/Transport window

Timecode/Transport window

Use the Window -> Timecode/Transport menu item to bring up the transport window.

NOTE

To use the timecode display, you must use the preferences to set the MIDI port used by the MTC (see "MIDI Time Code" on page 8).

This window has two appearances; a fixed size and a resizable appearance. Change between them by clicking in the timecode area.

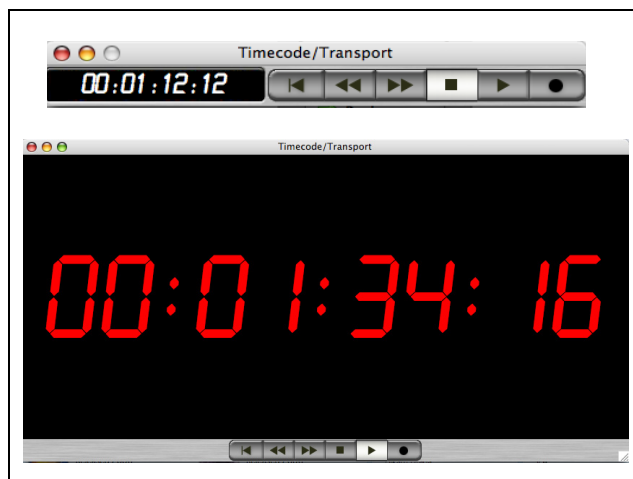


Figure 6: Fixed size (top) and resizable (bottom) transport window

Click on the on-screen transport buttons, which work in the same way as the physical transport keys on the TASCAM DM. Note the "return to start" button which has no physical counterpart.

As timecode is received through the appropriate MIDI port, the display updates.

Meter bridge

This allows all channels, all busses and all aux sends, along with the stereo buss, to be metered.

Select Meter Bridge from the Windows menu.

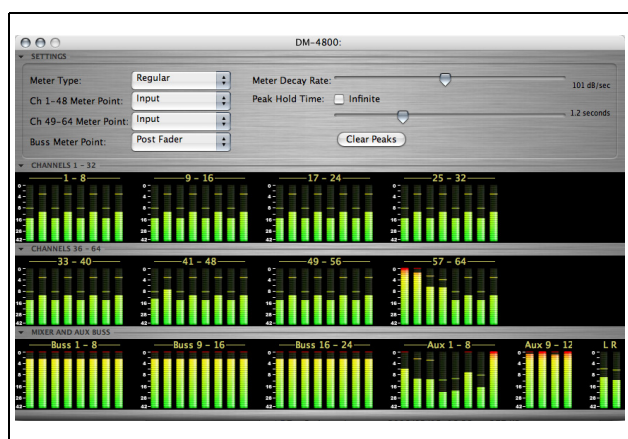


Figure 7: Meter Bridge window

Note that this window comes in three "fold-out" sections, accessed by the triangular controls on the left

of the window. Figure 7, *Meter Bridge window* shows all sections displayed.

The top control section of the window allows the meter settings to be made: the type can be either Regular (peak) or Average (more similar to VU meter response). Sliders allow the Meter Decay Rate and Peak Hold Time to be set and a check box provides Infinite peak hold time. The Clear Peaks button resets peak hold displays.

The pickoff points for the meters can then be set. For channels 1 through 48 (DM-4800) or 1 through 32 (DM-3200), the choices are: Input, Pre Gate, Post Gate, Pre Insert and Post Fader. Consult the block diagram in the *Owner's Manual* if you are unsure of where these belong.

For channels 49 through 64 (DM-4800) or 33 through 49 (DM-3200), these choices are restricted to Input or Post Fader.

For the busses (and aux sends) the choices are: Pre Comp (compressor), Pre Fader and Post Fader.

Firmware update

From time to time, TASCAM will make updates available from the Web site or through your TASCAM distributor. To install these updates, use the Firmware Update window (accessed from the Windows menu) in the TMCompanion software:

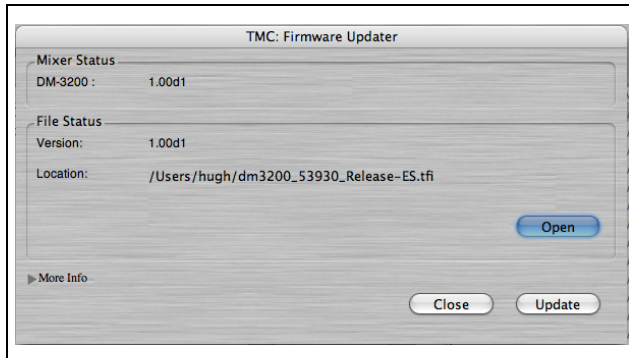


Figure 8: Firmware update

Press the on-screen Open button to open a file browser, where you can select the firmware update (these always have a .tfi extension).

The version of the mixer firmware and the version of the new firmware are shown in the Mixer Status and File Status fields, respectively.

More information, including whether the file actually performs a recommended upgrade or not, is available by using the More Info foldout (not shown in Figure 8, *Firmware update*).

To update the TASCAM DM Press the on-screen Update button. An on-screen status bar displays the progress of the operation, and the screen of the TASCAM DM shows the update progress. The process takes under five minutes, including the reboot of the TASCAM DM unit.

NOTE

The TASCAM DM should not be turned off during the update process or subsequent reboot, although it has a "safety-net" built in which allows the unit to be started without a full operating system.

Use the Close button to close the window without updating the unit.

Screen shot

The screen shot option allows you to capture the current mixer screen as a PNG file to a directory of your choosing.

When the option is selected, a standard browser panel appears, allowing you to select the directory and name the resulting file.

As the screen data is uploaded to the host computer, a progress bar appears on screen.

3 – Preferences

The Preferences panel allows the setting of various parameters:

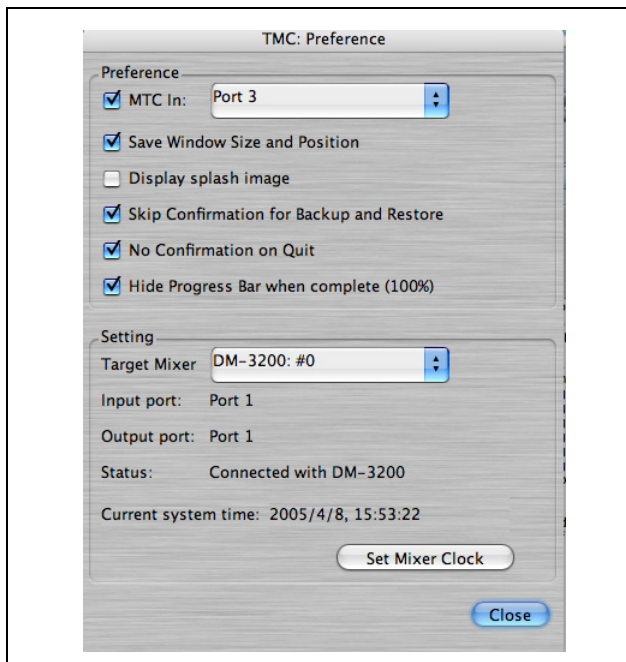


Figure 9: Preferences screen

MIDI Time Code

Firstly, MIDI Time Code can be accepted for use with the Transport Window, and the default for this over the USB connection is Port 3 (see the MIDI sec-

tion of the *Owner's Manual* for details of the virtual ports used by the TASCAM DM).

Enable MTC In and select the MIDI port.

Window settings

The last window size and position can be remembered, using Save Window Size and Position.

Display splash image allows you to choose whether a “splash screen” announces the launching of the TMCompanion application or not.

Confirmations

By default, the TMCompanion software asks for confirmation before transferring project data between the host computer and the TASCAM DM (during transfer a progress bar appears). Turn this confirma-

tion off with the Skip Confirmation for Backup and Restore option.

You can also turn off the notice confirming quitting the application with the No Confirmation on Quit option.

Settings

The mixer's internal clock and calendar may be set from the host computer's internal clock using the Set Mixer Clock button.

TEAC CORPORATION

Phone: +81-422-52-5082
3-7-3, Nakacho, Musashino-shi, Tokyo 180-8550, Japan

www.tascam.com

TEAC AMERICA, INC.
Phone: +1-323-726-0303
7733 Telegraph Road, Montebello, California 90640

www.tascam.com