
DM-3200 DAW Control

Mackie Control emulation for

Steinberg Cubase SX & Nuendo (2.2 & higher)

Version 1.10

1.	Summary	3
2.	Setting up the DM-3200	3
2.1	Setting up the Steinberg app	3
3.	LCD screen	5
4.	Channel Strip	5
5.	Top panel buttons	6
	Ch sends	6
5.1	6
5.2	EQ control	6
5.2.1	EQ parameters	6
6.	Transport	7
6.1	F1-8	7

1. Summary

This manual describes using the DM-3200's control surface features with Steinberg apps Cubase SX 2.2 & higher and Nuendo 2.2 and higher.

The protocol is compatible with both Cubase SX 2.2 & higher and Nuendo 2.2 & higher, but the following descriptions refer only to Cubase SX for simplicity. Set up with Nuendo is the same.

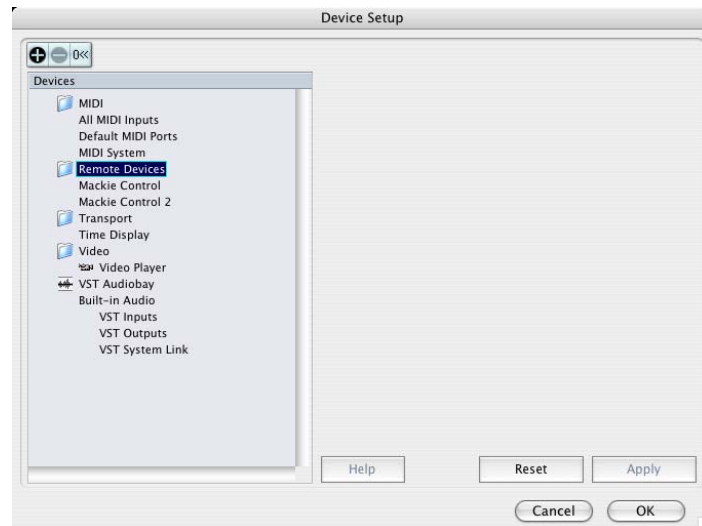
2. Setting up the DM-3200

Add two MC Steinberg devices at the DM-3200 REMOTE > EXT.CTRL screen.

Similarly, add one MC Steinberg device at the REMOTE > MACHINE CTRL.

2.1 Setting up the Steinberg app

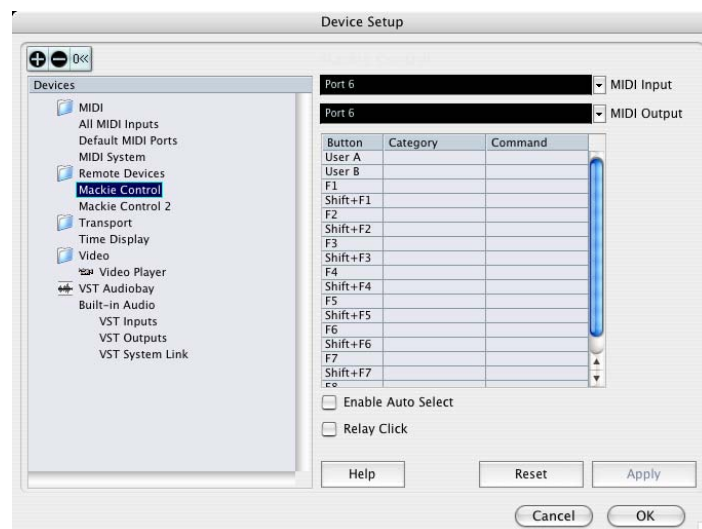
Click Cubase SX3 > Device Setup and the device setting window opens.



Click the + (Add) button at upper right to add control surface devices and add two Mackie Control devices.



Select Mackie Control and then select Port 6 for MIDI Input/MIDI Output.



Click Apply (if Apply is not clicked, your setting will have no effect).

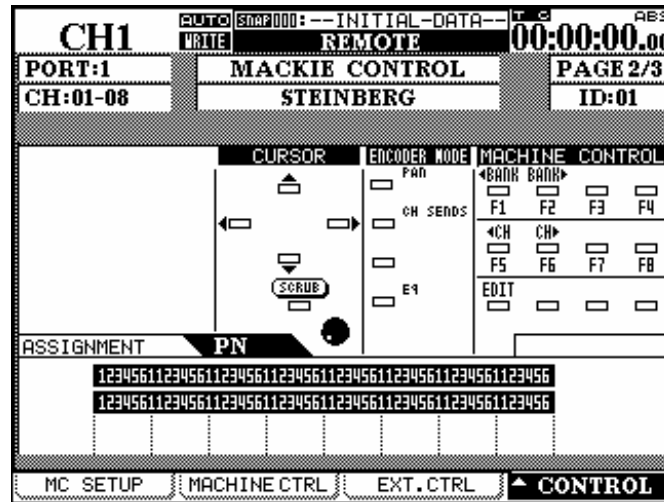
In a similar way, select Mackie Control 2 and then select Port 5 for MIDI Input/MIDI Output.

!! NOTE !! Mackie Control 2 must be set to Port 5, and Mackie Control to Port 6 for correct operation.

The device setting is now completed.

3. LCD screen

The Steinberg-ready Mackie Control screen looks like this:



4. Channel Strip

The table below provides an overview of the channel strip-related Steinberg-ready functions.

DM-3200	Modifier	Steinberg function	Note
Ring encoder		Encoder	Controls operations such as Pan, EQ and Aux send.
Ring LED		Ring LED	Turns on the LED according to data sent by the app in response to Ring encoder operation.
Select		Select	Selects tracks. The SELECT LED turns on for the selected tracks.
Select	Rec	Rec ready	Arms tracks (making them ready for recording). The REC LED turns on for the armed tracks.
Solo		Solo	Switches the track solo on and off. The SOLO LED turns on when a track is soloed. Not soloed tracks are muted.
Mute		Mute	Switches the track mute on and off. The MUTE LED turns on when a track is muted.
Track fader touch		Track fader touch	Sends out a touch-sense Track fader message.
Track fader		Track fader	Controls the Track fader.
Master fader touch		Master fader touch	Sends out a touch-sense Master track message.
Master fader		Master fader	Controls the Master fader.

5. Top panel buttons

The table below provides an overview of the top panel buttons-related Steinberg-ready functions.

DM-3200	Modifier	Steinberg function	Note
Pan		Pan	Sets parameters to be controlled by the Ring encoder to Pan.
Ch sends		Ch sends	Controls send 1-8 level of a single selected track.
Flip		Flip	Flips between a parameter value assigned to a track's Ring encoder and a fader level.
EQ		EQ	Controls the EQ on a single selected track.
Data wheel			Activates the Shuttle function.
	Scrub	Scrub	Shifts the data wheel in the Scrub mode. When the data wheel is in Scrub mode, the SCRUB switch in the LCD is displayed inverted.

5.1 Ch sends

The send 1-8 level can be controlled per selected track. The operation items are assigned as follows:

Item	Target	Note.
Ring encoder1-8	Channel Send1-8 level control	
Ring encoder9-16	Channel send 1-8 On/Off	On: Ring LED all lit Off Ring LED all off

5.2 EQ control

5.2.1 EQ parameters

By pressing the Encoder mode EQ key, the EQ on each track can be controlled.

The operation items are assigned as follows:

Item	Target	Note.
Ring encoder 1	Low gain control	
Ring encoder 2	Low frequency control	
Ring encoder 3	Low Q control	
Ring encoder 4	Low band On/Off	On: Ring LED all lit Off Ring LED all off
Ring encoder 5	Low mid gain control	
Ring encoder 6	Low mid frequency control	
Ring encoder 7	Low mid Q control	
Ring encoder 8	Low mid band On/Off	On: Ring LED all lit Off Ring LED all off
Ring encoder 9	High mid gain control	
Ring encoder 10	High mid frequency control	
Ring encoder 11	High mid Q control	
Ring encoder 12	High mid band On/Off	On: Ring LED all lit Off Ring LED all off
Ring encoder 13	High gain control	
Ring encoder 14	High frequency control	
Ring encoder 15	High Q control	
Ring encoder 16	High band On/Off	On: Ring LED all lit Off Ring LED all off

!! NOTE !! If the EQ on a band is not turned on, all other parameters on that band are not activated.

6. Transport

The table below provides an overview of the transport-related Steinberg-ready functions.

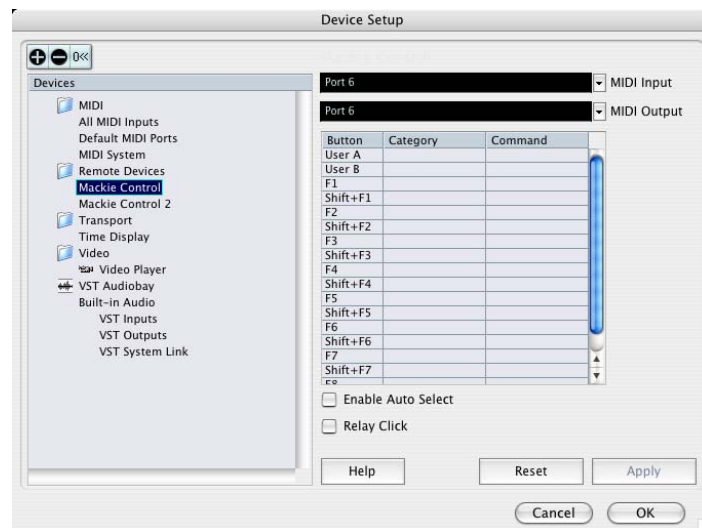
DM-3200	Modifier	Steinberg function	Note
Rewind		Rewind	Activates the Rewind function.
Fast forward		Fast forward	Activates the Fast Forward function.
Stop		Stop	Activates the Stop function.
Play		Play	Activates the Play function.
Record		Record	Activates the Record function.
<BANK		< BANK	Moves control target tracks leftwards in groups of 8 tracks.
BANK>		BANK>	Moves control target tracks rightwards in groups of 8 tracks.
<LOCATE		<CHANNEL	Moves control target tracks leftwards by one track.
LOCATE>		CHANNEL>	Moves control target tracks rightwards by one track.
F1-8	CTRL	F1-8	Controls functions assigned to the F1-8 keys.

6.1 F1-8

Holding down the CTRL key and pressing the F1-8 keys allows you to control the functions assigned to those keys.

Click Device > Device Setting and select Mackie Control. At the resulting screen you can set up functions to assign to the F1-8 keys and Shifted F1-8 keys.

Cubase SX setup screen



!! NOTE !! The same settings must be made for Mackie Control and Mackie Control 2 for correct operation.