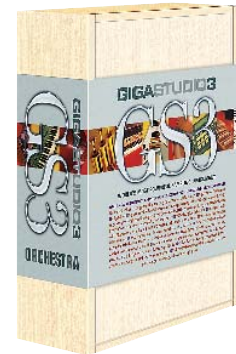
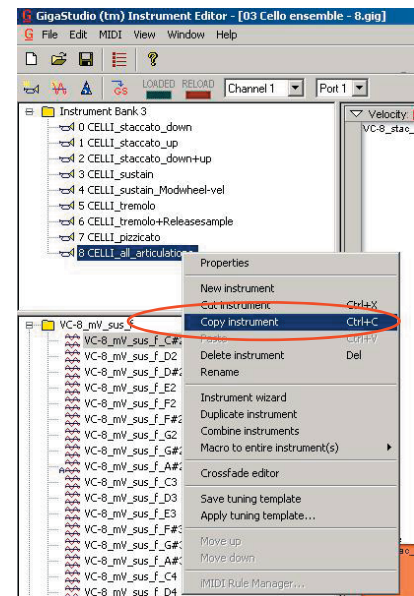


One of the most exciting features in the **GigaStudio 3.1** update is the **Dynamic Expression Filter**. This 7th-order filter fills in the shades between multisamples, resulting in realistic swells and smooth transitions between multisamples. Best of all, this new filter can be added to any of your 24-bit GigaStudio libraries. This document uses one of the *Vienna Giga Symphony* instruments included with GigaStudio 3 Orchestra as an example.

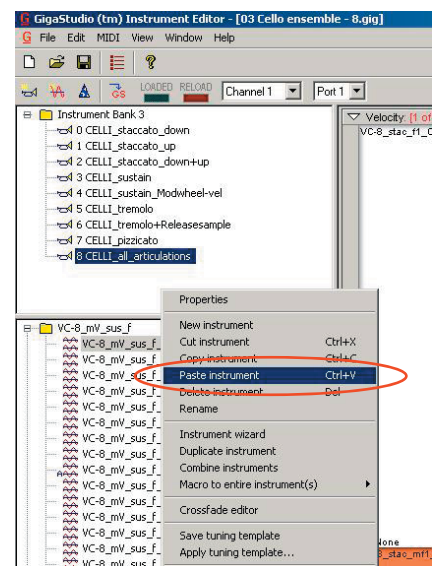


## Adding the DEF to a .gig Instrument

1. Launch the GigaStudio Editor.  
(Start/Programs/Tascam/GigaStudio 3/GigaStudio Editor)
2. Open the "o3 Cello ensemble - 8.gig" file. This is part of the Vienna Giga Symphony collection installed at part of GS3 Orchestra. If you don't have this file, you can follow along with any 24bit .gig file.
3. *Right Click* on "8 CELLI\_all\_articulations" and select "copy instrument."
4. *Right Click* in the white space below and select "paste instrument".

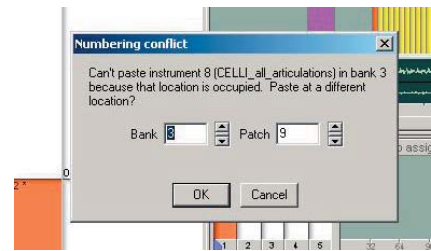


Step 3: Copy Instrument



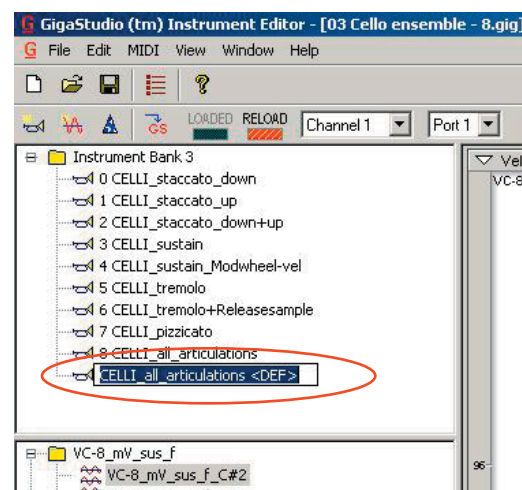
Step 4: Paste Instrument

5. This will bring up a “Numbering Conflict” dialog, which should be auto filled for Bank 3, Patch 9. Since Vienna Symphonic Library has predetermined that this Cello instrument is bank 3, the new instrument will sequentially fall in line as the next instrument in this bank, number 9. Click the OK button to continue.



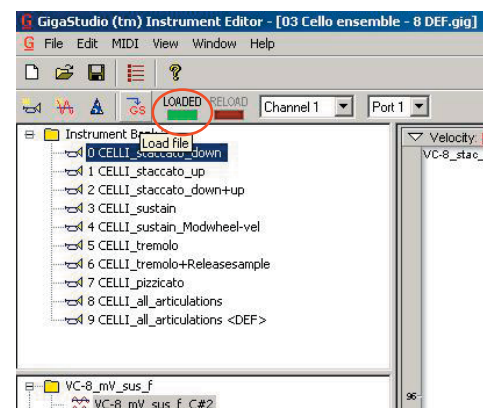
Step 5: Click OK

6. Right Click on the new instrument (number 9) and select “Rename.”



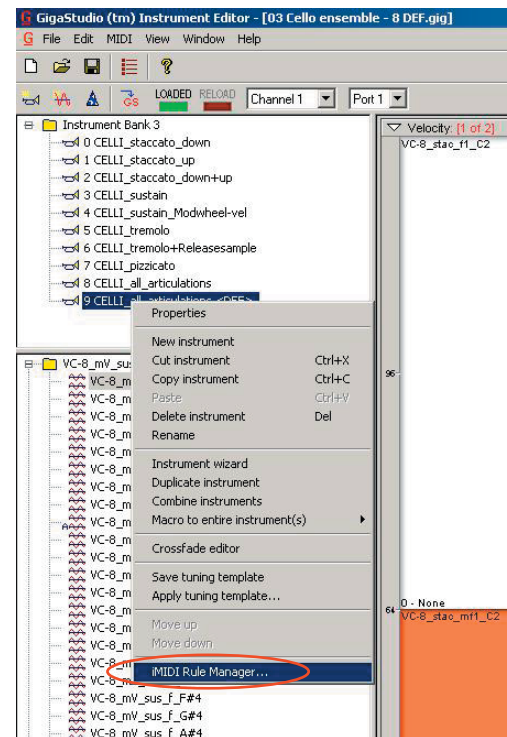
Step 6: Rename Instrument

7. Give this instrument a new name. I have chosen to add <DEF> to the end of the name.
8. Go to the File menu, choose “Save As” and give this instrument a new name, just in case you want to return to the original file.
9. Click the Load button to open the instrument in the editor. You will know when it's loaded because you can play it and the Green “Loaded” light will be lit.



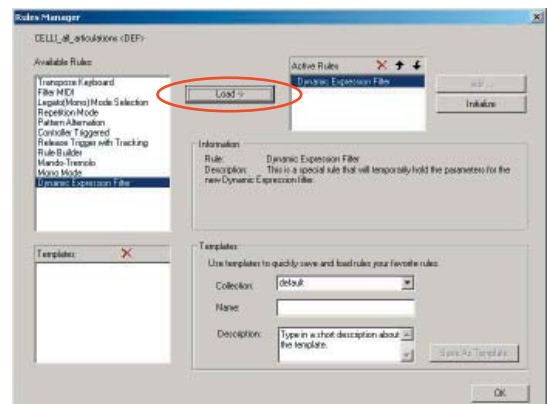
Step 9: The instrument is loaded

10. Right Click on the new instrument, number 9 and select “iMIDI Rule Manager”



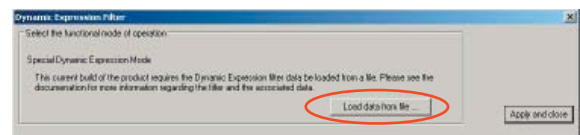
Step 10: Select “iMIDI Rule Manager”

11. Select the Dynamic Expression Filter from the list on the left and click on the “Load ->” button.



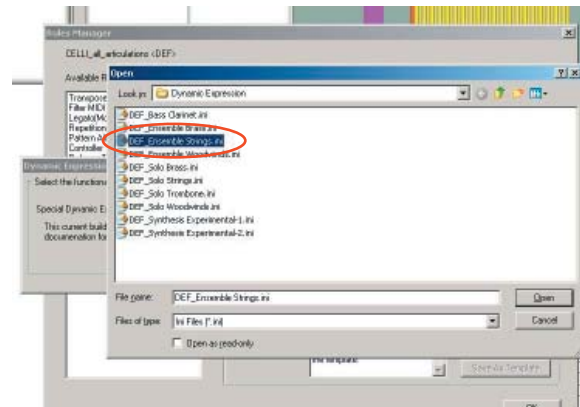
Step 11: Add the Dynamic Expression Filter”

12. This will bring up the Dynamic Expression Filter dialog box. Click on the “Load Data from File” button.



Step 12: Click “Load Data from File”

13. A browse window will open displaying a list of .ini files. Each of these files contain DEF parameter sets for a variety of instrument types. Select the "DEF\_Ensemble Strings.ini" file and click the "Open" button on the browser.



Step 13: Open "DEF\_Ensemble Strings.ini"

14. Click the "Apply and close" button on the Dynamic Expression Filter dialog box.
15. Click the "OK" button on the Rules Manager dialog box.
16. Save the file.
17. Close the Editor and launch GigaStudio 3.

You have now applied a Dynamic Expression Filter to your VSL cello sample. You can do this to the rest of your Vienna Symphonic Collection, or any other 24-bit instrument you choose. Try experimenting with the different "ini" files with instruments. The brass files will tend to make timbres more "crispy" while the string files will yield a smoother sound at the highest expression levels.

When you load this instrument in GS3, be sure to expand the file view in the QuickSound browser so that you can see all 9 of the instruments within. Load the last instrument – the one you gave a different name like "<DEF>." When you play the new instrument, move the mod wheel to change the timbre of your performance. You should notice the cellos sound like they're playing louder as you move the mod wheel.