

TASCAM

US-1200

USB2.0 Audio Interface

D01207420B

Quick Start Guide

Before connecting this unit to a computer, the dedicated driver must be installed on the computer.

Thank you for your purchase of the TASCAM US-1200 USB2.0 Audio Interface.

This 24-bit/96kHz USB audio interface supports the simultaneous input of six audio channels and output of two audio channels in a 1U rackmount size. The mixer panel that can be used on a computer display provides a mixer screen and various

effects screens with faders, knobs, buttons and other controls that enable even more intuitive operation.

In this manual we give examples of the basic operation of this unit. For details, download the Owner's Manual from the TEAC Global Site (<http://teac-global.com/>).

IMPORTANT SAFETY PRECAUTIONS

— For U.S.A. —

INFORMATION TO THE USER

This equipment has been tested and found to comply with the limits for a Class B digital device, pursuant to Part 15 of the FCC Rules. These limits are designed to provide reasonable protection against harmful interference in a residential installation. This equipment generates, uses, and can radiate radio frequency energy and, if not installed and used in accordance with the instruction manual, may cause harmful interference to radio communications. However, there is no guarantee that interference will not occur in a particular installation. If this equipment does cause harmful interference to radio or television reception, which can be determined by turning the equipment off and on, the user is encouraged to try to correct the interference by one or more of the following measures.

- Reorient or relocate the receiving antenna.
- Increase the separation between the equipment and receiver.
- Connect the equipment into an outlet on a circuit different from that to which the receiver is connected.
- Consult the dealer or an experienced radio/TV technician for help.

CAUTION

Changes or modifications to this equipment not expressly approved by TEAC CORPORATION for compliance could void the user's authority to operate this equipment.

For Canada

THIS CLASS B DIGITAL APPARATUS COMPLIES WITH CANADIAN ICES-003. CET APPAREIL NUMERIQUE DE LA CLASSE B EST CONFORME A LA NORME NMB-003 DU CANADA.

This appliance has a serial number located on the rear panel. Please record the model number and serial number and retain them for your records.

Model number _____

Serial number _____

Declaration of Conformity

Model Number : US-1200

Trade Name : TASCAM

Responsible party : TEAC AMERICA, INC.

Address : 7733 Telegraph Road, Montebello,
California, U.S.A.

Telephone number : 1-323-726-0303

This device complies with Part 15 of the FCC Rules. Operation is subject to the following two conditions: (1) this device may not cause harmful interference, and (2) this device must accept any interference received, including interference that may cause undesired operation.

DECLARATION OF CONFORMITY

We, TEAC EUROPE GmbH, Bahnstrasse 12, 65205 Wiesbaden-Erbenheim, Germany declare in own responsibility, the TEAC product described in this manual is in compliance with the corresponding technical standards.



IMPORTANT SAFETY INSTRUCTIONS

- 1 Read these instructions.
- 2 Keep these instructions.
- 3 Heed all warnings.
- 4 Follow all instructions.
- 5 Do not use this apparatus near water.
- 6 Clean only with dry cloth.
- 7 Do not block any ventilation openings. Install in accordance with the manufacturer's instructions.
- 8 Do not install near any heat sources such as radiators, heat registers, stoves, or other apparatus (including amplifiers) that produce heat.
- 9 Do not defeat the safety purpose of the polarized or grounding-type plug. A polarized plug has two blades with one wider than the other. A grounding type plug has two blades and a third grounding prong. The wide blade or the third prong are provided for your safety. If the provided plug does not fit into your outlet, consult an electrician for replacement of the obsolete outlet.
- 10 Protect the power cord from being walked on or pinched particularly at plugs, convenience receptacles, and the point where they exit from the apparatus.
- 11 Only use attachments/accessories specified by the manufacturer.
- 12 Use only with the cart, stand, tripod, bracket, or table specified by the manufacturer, or sold with the apparatus. When a cart is used, use caution when moving the cart/apparatus combination to avoid injury from tip-over.



- 13 Unplug this apparatus during lightning storms or when unused for long periods of time.
- 14 Refer all servicing to qualified service personnel. Servicing is required when the apparatus has been damaged in any way, such as power-supply cord or plug is damaged, liquid has been spilled or objects have fallen into the apparatus, the apparatus has been exposed to rain or moisture, does not operate normally, or has been dropped.

- The apparatus draws nominal non-operating power from the AC outlet with its POWER or STANDBY/ON switch not in the ON position.
- The mains plug is used as the disconnect device, the disconnect device shall remain readily operable.
- Caution should be taken when using earphones or headphones with the product because excessive sound pressure (volume) from earphones or headphones can cause hearing loss.
- If you are experiencing problems with this product, contact TEAC for a service referral. Do not use the product until it has been repaired.

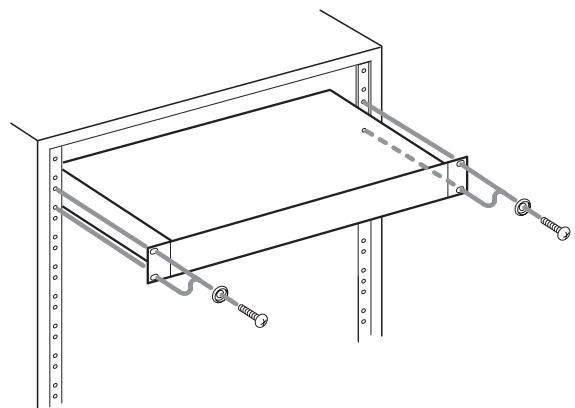
CAUTION

- Do not expose this apparatus to drips or splashes.
- Do not place any objects filled with liquids, such as vases, on the apparatus.
- Do not install this apparatus in a confined space such as a book case or similar unit.
- The apparatus should be located close enough to the AC outlet so that you can easily grasp the power cord plug at any time.
- If the product uses batteries (including a battery pack or installed batteries), they should not be exposed to sunshine, fire or excessive heat.
- CAUTION for products that use replaceable lithium batteries: there is danger of explosion if a battery is replaced with an incorrect type of battery. Replace only with the same or equivalent type.

■ RACK-MOUNTING THE UNIT

Use the supplied rack-mounting kit to mount the unit in a standard 19-inch rack, as shown below.

Remove the feet of the unit before mounting.




CAUTION

- Leave 1U of space above the unit for ventilation.
- Allow at least 10 cm (4 in) at the rear of the unit for ventilation.

■ For European Customers

Disposal of electrical and electronic equipment

- All electrical and electronic equipment should be disposed of separately from the municipal waste stream via designated collection facilities appointed by the government or the local authorities.
- By disposing of the electrical and electronic equipment correctly, you will help save valuable resources and prevent any potential negative effects on human health and the environment.
- Improper disposal of waste equipment can have serious effects on the environment and human health as a result of the presence of hazardous substances in electrical and electronic equipment.
- The crossed out wheeled dust bin symbol indicates that electrical and electronic equipment must be collected and disposed of separately from household waste. 
- The return and collection systems are available to the end users. For more detailed information about disposal of old electrical and electronic equipment, please contact your city office, waste disposal service or the shop where you purchased the equipment.

■ For China

产品有毒有害物质或元素的名称及含量

机种: US-1200	有毒有害物质或元素					
品名	铅 (Pb)	汞 (Hg)	镉 (Cd)	六价铬 (Cr6+)	多溴联苯 (PBB)	多溴二苯醚 (PBDE)
1 CHASSIS部份	○	○	○	○	○	○
2 PCB Assy部份	×	○	○	○	○	○
3 线材部份	○	○	○	○	○	○
4 附属品部份	○	○	○	○	○	○
5 SEAL部份	○	○	○	○	○	○
6 包装部份	○	○	○	○	○	○

- : 表示该有毒有害物质在该部件所有均质材料中的含量均在 SJ/T11363-2006 标准规定的限量要求以下。
 ×: 表示该有毒有害物质至少在该部件的某一均质材料中的含量超出 SJ/T11363-2006 标准规定的限量要求。
 (针对现在代替技术困难的电子部品及合金中的铅)

Included items

This product includes the following items.

Take care when opening the package not to damage the items. Keep the packing materials for transportation in the future.

Please contact the retailer where you purchased this unit if any of these items are missing or have been damaged during transportation.

- Main unit× 1
- AC adaptor (GPE248-120200-Z)× 1
- USB cable× 1
- A rack-mounting screw kit.....x1
- SONAR LE installation guidex1
- Ableton Live Lite installation guide.....x1
- Warranty card× 1
- Quick Start Guide (this document)× 1

CAUTION

Always use the included GPE248-120200-Z AC adaptor with this unit. Moreover, do not use the included AC adaptor with other equipment. Doing so could cause malfunction, fire or electric shock.

Trademarks

- TASCAM is a trademark of TEAC Corporation, registered in the U.S. and other countries.
- Microsoft, Windows, Windows XP, Windows 7, Windows 8 and Windows Media are either registered trademarks or trademarks of Microsoft Corporation in the United States and/or other countries.
- Apple, Macintosh, Mac OS, Mac OS X and iTunes are trademarks of Apple Inc.
- SONAR is a trademark of Cakewalk, Inc.
- Ableton is a trademark of Ableton AG.
- ASIO is a trademark and software of Steinberg Media Technologies GmbH.
- Other company names, product names and logos in this document are the trademarks or registered trademarks of their respective owners.

Using the TEAC Global Site

You can download the dedicated drivers and Owner's Manual necessary for this unit from the TEAC Global Site (<http://teac-global.com/>).

1. Open the TEAC Global Site (<http://teac-global.com/>).
2. In the TASCAM Downloads section, click the desired language to open the Downloads website page for that language.

NOTE

If the desired language does not appear, click Other Languages.

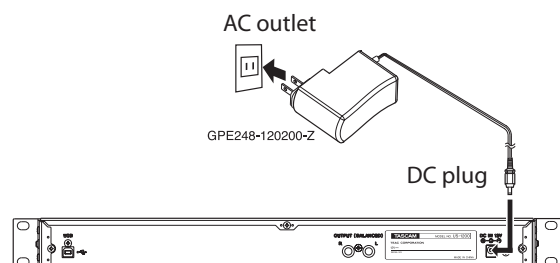
3. Click the product name in the "Search by Model Name" section to open the Downloads page for that product.
4. Select and download the dedicated drivers and Owner's Manual that are needed.

User registration

Customers in the USA, please visit the TASCAM website (<http://tascam.com/>) to register as a user online.

Connecting the power

Confirm in advance that the unit's **STANDBY/ON** switch is set to **STANDBY**. Connect the included GPE248-120200-Z AC adaptor to the unit and a power source as shown below.



CAUTION

Always use the GPE248-120200-Z AC adaptor that was shipped with the unit because it matches the unit's requirements. Using a different AC adaptor could cause malfunction, overheating, fire or other problems.

Installing the driver

A driver must be installed on the computer to use this unit. Download the latest driver for the operating system you are using from the TEAC Global Site (<http://teac-global.com/>).

CAUTION

Restarting the computer might be necessary after installation completes. Save your data and conduct other necessary steps in other applications before quitting them.

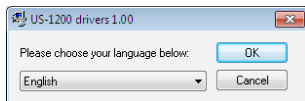
Installing the driver for Windows

NOTE

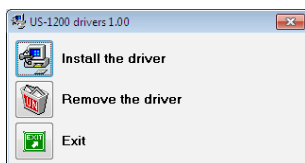
- *Install the driver on the computer before connecting the unit to it with the USB cable.*
If you already connected the USB cable, and the Found New Hardware Wizard launched, cancel and quit the wizard and disconnect the USB cable.
- *When installing the driver, a message saying something like, "The software you are installing for the hardware has not passed Windows Logo testing to verify its compatibility with Windows" might appear. If this message appears, click "Continue Anyway" to proceed with the installation.*

■ Driver installation procedures

1. Download the latest driver for the operating system you are using from the TEAC Global Site (<http://teac-global.com/>).
2. Open the zip file containing the driver on the computer desktop.
3. Double-click the "setup.cmd" file in the folder that was created when you opened the zip file.
4. When the language selection screen (below) appears, select the language you prefer and then click the "OK" button. (The screens and button names used in the following instructions are for the "English" selection.)



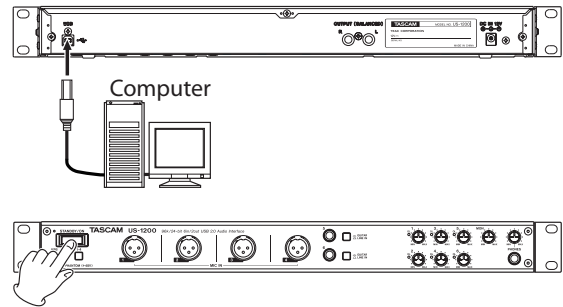
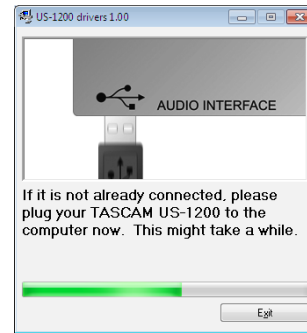
5. Click the "Install the Driver" button when the screen below appears.



6. Read the contents of the License Agreement, and select "I accept the agreement" if you agree to the terms. Next, click the "Install" button to start installation.



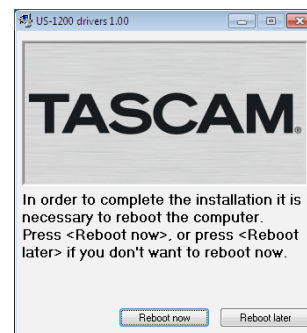
7. When the following screen appears, connect the unit and the computer with the included USB cable. Then, press the unit's **STANDBY/ON** switch to turn on its power.



CAUTION

*Before turning on the power, set the unit's **MON** and **PHONES** knobs to **MIN**. Failure to do so could cause sudden loud noises from monitoring equipment, and this could damage the equipment or harm hearing.*

8. When the screen below appears, the installation is complete. Click the "Reboot now" button to restart the PC to use the driver.



Installing the driver for Mac OS X

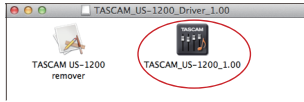
NOTE

- *Install the driver on the computer before connecting the unit to it with the USB cable.*
- *Depending on the Gatekeeper setting, a warning message might appear during installation. For more information about Gatekeeper, see the "Gatekeeper" section of "3 – Installation" in the Owner's Manual.*

■ Driver installation procedures

1. Download the latest driver for the operating system you are using from the TEAC Global Site (<http://teac-global.com/>).

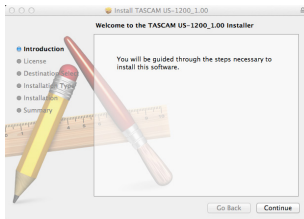
2. Double-click "TASCAM_US-1200_driver_X.XX.dmg", which is the downloaded and saved driver disk image file, and double-click "TASCAM US-1200 X.XX" inside the folder.



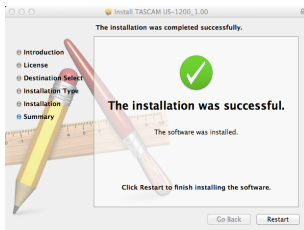
NOTE

Depending on the computer's settings, the downloaded zip file might not have opened automatically. In this case, open the zip file first and then double-click the disk image file.

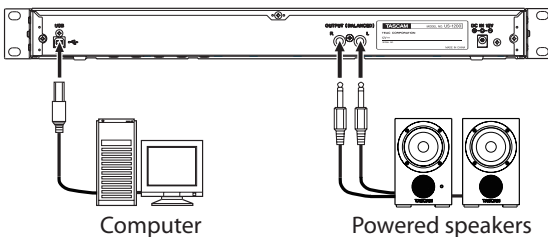
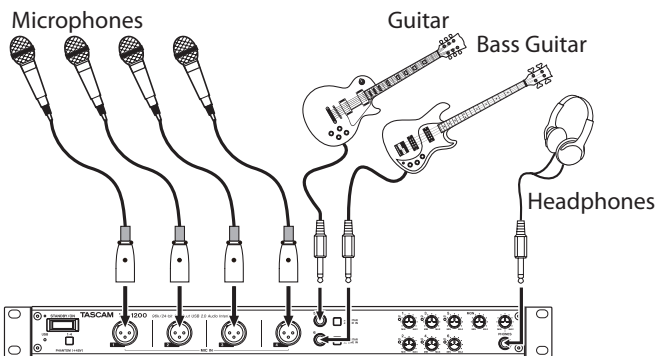
3. After the installer launches, follow the instructions on the screen to proceed with the installation.



4. The following screen appears when that installation has completed. Click the "Restart" button to complete installation and restart the computer automatically.



Connecting other equipment



Connection example

CAUTION

- Before making connections, turn this unit and all equipment to be connected off (standby).

- The PHANTOM (+48V) switch is located below the power switch and affects all four input channels simultaneously. Do not turn Phantom power on when connecting a mic that does not require phantom power.
- Turning phantom power on when a dynamic mic or other mic that does not require it is connected could damage the equipment.
- Do not connect or disconnect mics while phantom power is on. Doing so could cause a loud noise and might damage the equipment.
- Before turning phantom power on or off, set the MON and PHONES knobs and the master fader on the "MIXER" screen to their minimum values. Depending on the connected mics, sudden loud noises from monitoring equipment could occur, and this could damage the equipment or harm hearing.
- Supplying phantom power to some ribbon mics will break them. If you are unsure, do not supply phantom power to a ribbon mic.

Connecting the USB cable

Use the included USB cable to connect the unit to a computer.

NOTE

- USB 1.1 is not supported.
- When connected to a USB 3.0 port, it will function in High Speed mode equivalent to USB 2.0 (480 Mbps maximum).
- This unit does not support computer suspend (sleep) mode. So the unit might not function properly after suspend mode ends. In this case, reconnect the USB cable.

CAUTION

Some USB devices access the USB bus frequently. In order to avoid audio signal dropouts, clicking and other noises, we strongly recommend that you do not connect other USB devices to the same bus that this unit is using. Connecting USB keyboards and mice, however, to the same bus should not be a problem.

Turning the unit on

Press the **STANDBY/ON** switch on the front of the unit to turn it on. When on, the indicator above and to the left of the switch light green. In addition, when the unit is correctly connected to a computer that has the driver installed, the USB indicator lights orange.

CAUTION

Before turning on the power, set the unit's MON and PHONES knobs to MIN. Failure to do so could cause sudden loud noises from monitoring equipment, and this could damage the equipment or harm hearing.

Making computer settings

NOTE

Since digital audio signal processing puts a fairly heavy load on the computer CPU, the operation of other applications, particularly graphic-intensive applications and Internet tools, could cause processing to fall behind. Do not run other applications when using audio applications.

Making settings on the INTERFACE screen

Launch the installed driver software.

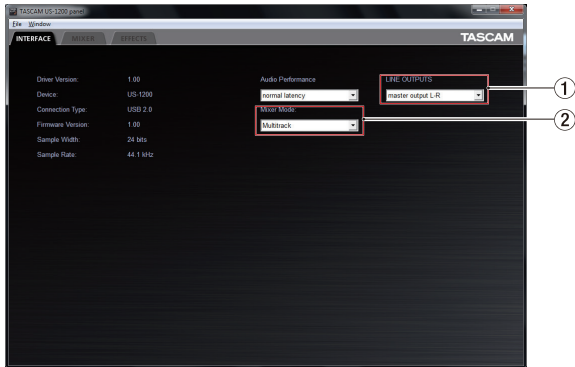
Windows

Click the TASCAM US-1200 Mixer Panel icon in the Taskbar or select TASCAM US-1200 Mixer Panel from TASCAM in All Apps.

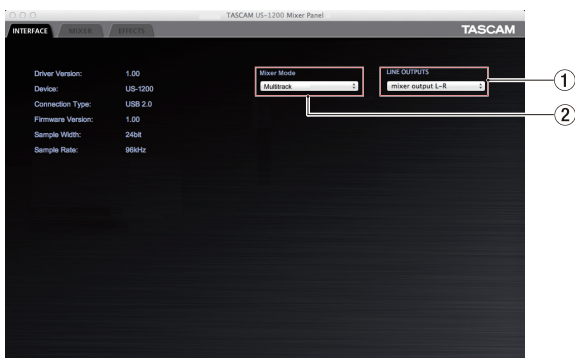
Mac OS X

Select TASCAM US-1200 Mixer Panel from Applications and launch it to open the mixer panel on the computer display.

Click the "INTERFACE" tab of the mixer panel to open the "INTERFACE" page.



Windows "INTERFACE" page



Mac "INTERFACE" page

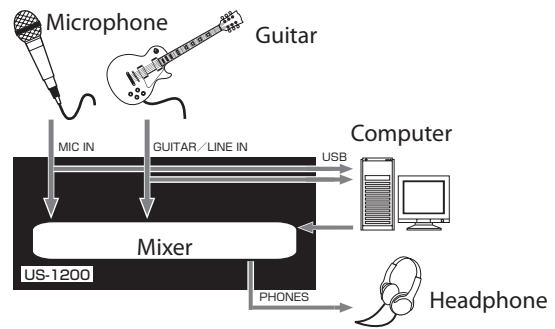
- 1 **LINE OUTPUTS**
Select the signals to be output from the **OUTPUT (BALANCED) L/R** and **PHONES** jacks.

- 2 **Mixer Mode selector**
Select whether to use multitrack mode, which sends signals input to this unit to the computer as is, or stereo mix mode, which mixes the signals input to this unit and the signals output from the computer and then returns this mix to the computer.

MULTI TRACK mode:

Each signal input to this unit is sent to the computer on an independent channel by USB at the same time that it is input in the mixer. Signals are output from the mixer in stereo and can be heard on headphones as well as speakers or other equipment connected to the outputs.

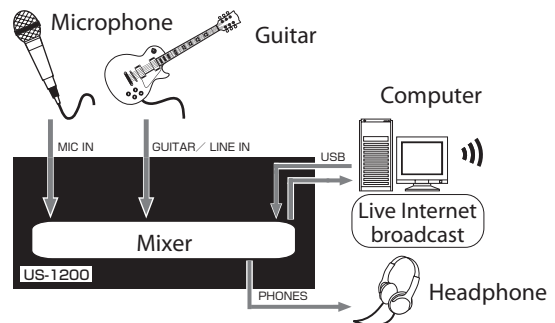
Example of use: with DAW or similar application



STEREO MIX mode:

All the signals input to this unit and the output of the computer are sent only to the mixer. Stereo output from the mixer is sent to the computer by USB. The mixer stereo output can also be heard on headphones as well as speakers or other equipment connected to the outputs.

Examples of use: live Internet streaming, stereo recording without later mixing down, etc.



Windows and Windows Media Player

Here we explain settings using Windows 7. For other operating systems, see "6 – Application guide" in the Owner's Manual.

1. Quit all applications and open "Control Panel" from the "Start menu".
2. Open "Sound".

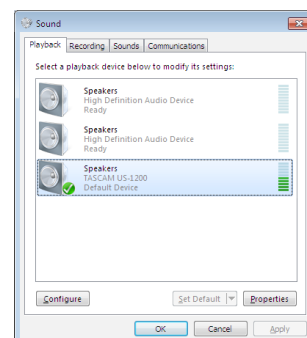
NOTE

If you do not see this item, click "Hardware and Sound".



3. On the "Playback" page, right-click "Speakers TASCAM US-1200", and click "Set as Default Device" in the pop-up menu that appears.

When you do this, the green check mark (✓) appears next to "Speakers TASCAM US-1200".



NOTE

To use this unit as the recording device, open the "Recording" page and use "Set as Default Device" for "Line In TASCAM US-1200".

- After completing the setting, click the "OK" button.
- Start Windows Media Player, select an audio file and begin playback.

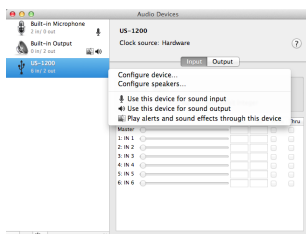
NOTE

- If you change the setting while Windows Media Player is running, the software will not recognize that the device has been changed. In this case, restart Windows Media Player.
- If you still cannot hear sound after making the settings and completing the procedures above, restart the computer.
- If you make this setting, sound will be output through this unit, but no sound will be output by the computer's speakers or headphone jack.
- By default, the mixer pan settings are set to the center. For this reason, sounds playing back will be heard as mono. Adjust the mixer settings as necessary (For details about the mixer settings, please refer to the Owner's Manual.).

Mac OS X and iTunes

Here we explain settings using Mac OS X 10.8 Mountain Lion. For other operating systems, see "6 – Application guide" in the Owner's Manual.

- Open the Utilities folder within the "Applications folder", and double-click "Audio MIDI Setup". Then open the "Audio Devices" window.
 - Click "US-1200" to select it, right-click or control-click "US-1200". Then, click "Use this device for sound output" in the pop-up menu.
- The speaker mark appears next to "US-1200".



NOTE

To use this device as the recording device, select "Use this device for sound input" for the "US-1200".

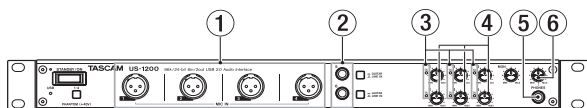
- Launch iTunes, select an audio file and start playback.

NOTE

By default, the mixer pan settings are set to the center. For this reason, sounds playing back will be heard as mono. Adjust the mixer settings as necessary (For details about the mixer settings, please refer to the Owner's Manual.).

Adjusting the input sound

Use the various controls on the front of the unit as necessary while listening to the input sound.



Adjust the analog input levels of the **MIC IN [1-4]** jacks (1) and **GUITAR/LINE IN [5-6]** jacks (2) using their gain knobs (4). The **OL** indicators to the left of each knob (3) should not light.

To listen to the monitoring signal using headphones, connect headphones to the **PHONES** jack (5) and adjust the **PHONES** knob (6).

NOTE

If you cannot hear the input signal through the headphones or the **OUTPUT (BALANCED)** outputs, check the "LINE OUTPUTS" selector on the "INTERFACE" page and the "MON MIX" slider on the "MIXER" page.

Using the mixer functions on the mixer panel

Launch the driver software installed on the computer to show the mixer panel on the computer display.

Windows

Select "TASCAM US-1200" from the "Control Panel" or "TASCAM US-1200 Mixer Panel" from "TASCAM" in "All Apps" and launch it.

Mac OS X

Select "TASCAM US-1200 Mixer Panel" from "Applications" and launch it.

Click the "MIXER" tab on the mixer panel to open the "MIXER" page as shown below.



1 Pan sliders

Use to adjust the stereo position of the signal input to each channel.

Use the mouse to click and drag a pan slider left or right to adjust the stereo position.

The pan slider appears blue when centered ("C") and yellow at all other positions.

2 Channel and master faders

Use these to adjust the master send levels of the input signals of each channel as well as the master output level.

Use the mouse to click and drag a fader up or down to adjust its level.

The current fader position (fader level gain value) is shown below the fader in dB.

3 MON MIX slider

Use this to adjust the mix balance between signals input to this unit through the **MIC IN** and **GUITAR/LINE IN** jacks and the signals output from the computer by USB. Signals input to this unit through its jacks increase the more this is set to the left and signals output from the computer increase the more this is set to the right.

See the Owner's Manual for information about other setting changes and setting other items not explained above.

TASCAM

US-1200

TEAC CORPORATION

Phone: +81-42-356-9143

1-47 Ochiai, Tama-shi, Tokyo 206-8530 Japan

<http://tascam.jp/>

TEAC AMERICA, INC.

Phone: +1-323-726-0303

7733 Telegraph Road, Montebello, California 90640 USA

<http://tascam.com/>

TEAC MEXICO, S.A. de C.V.

Phone: +52-55-5010-6000

Río Churubusco 364, Colonia Del Carmen, Delegación Coyoacán, CP 04100, México DF, México

<http://teacmexico.net/>

TEAC UK LIMITED

Phone: +44-8451-302511

Meridien House, Ground Floor,69 - 71, Clarendon Road, Watford, Hertfordshire, WD17 1DS, UK

<http://tascam.eu/>

TEAC EUROPE GmbH

Phone: +49-611-71580

Bahnstrasse 12, 65205 Wiesbaden-Erbenheim, Germany

<http://tascam.eu/>

TEAC SALES & TRADING(SHENZHEN) CO., LTD

Phone: +86-755-88311561~2

Room 817, Block A, Hailrun Complex, 6021 Shennan Blvd., Futian District, Shenzhen 518040, China

Printed in China